

SMART PRODUCT AND APPLICATION RANGE

BE A CHAMPION IN THE PLASTERBOARD CATEGORY
30% easier to install,
30% easier to transport!



Info +40 312 240 100



www.siniat.ro



Calculator for drywall systems

CONTENTS

ETEX GROUP - INNOVATION FOR OVER 110 YEARS	4
Benefits and advantages	10
Smart KIT package: full product range	12
Plasterboards in the Smart range	14
Smart Metal drywall profiles	16
Smart Top finishing	17
Smart KIT - advantages, applications and materials needed	20
Wall for technical spaces/storage	22
Partitions between rooms	24
Shaft wall for closing dedicated spaces for pipeline and cable routes, ventilation paths	26
Direct bonded dry lining to masonry/concrete wall	28
Dry lining on metal structure to masonry/concrete wall	30
Suspended ceiling	32
Suspended ceiling for closing the attic	34
Fire-resistant Smart KIT	36
EI20 - single layer wall	38
EI30 - double layer wall	40
EI45 - single layer wall	42
EI90 - double layer wall	42
Making door frames	46
Exceptional finishings : finishing skim coats	50
Siniat commercial team	53
Transport and storage conditions	54



Who we are

From our start in 1905 Etex has been pioneering to become a global leader in lightweight construction solutions. Founded and still headquartered in Brussels, Belgium, Etex quickly expanded throughout Europe and the world. Permanent innovation and research in fire protection, plaster, fibre-cement and plastering technology, modular construction and engineering have allowed Etex to contribute to the transformation of the construction industry, building on its purpose to Inspire ways of living.



What we do

We improve our customers' quality of life with increasingly efficient lightweight building solutions



What motivates us

Creating value for our employees, customers, local communities, partners and shareholders.

etex inspiring ways
of living

Our major brands

 **Siniat**

Promat

 **EQUITONE**
Fibre cement facade materials

 **URSA**

 **Superboard**

Euronit

PLADUR

 **Gyplac**

Eternit

CEDRAL

 **DURLOCK**

 **Kalsi**

The road to sustainability 2030

It's our plan to help build a better and sustainable future. We are working towards this vision by caring for society and environmental impact, developing innovative solutions for the construction industry.

Together, we are on an exciting journey towards improved sustainability in the short and long term.

It's our plan to help build a better and sustainable future. We are working towards this vision by caring for society and environmental impact, developing innovative solutions for the construction industry.

Together, we are on an exciting journey towards improved sustainability in the short and long term.

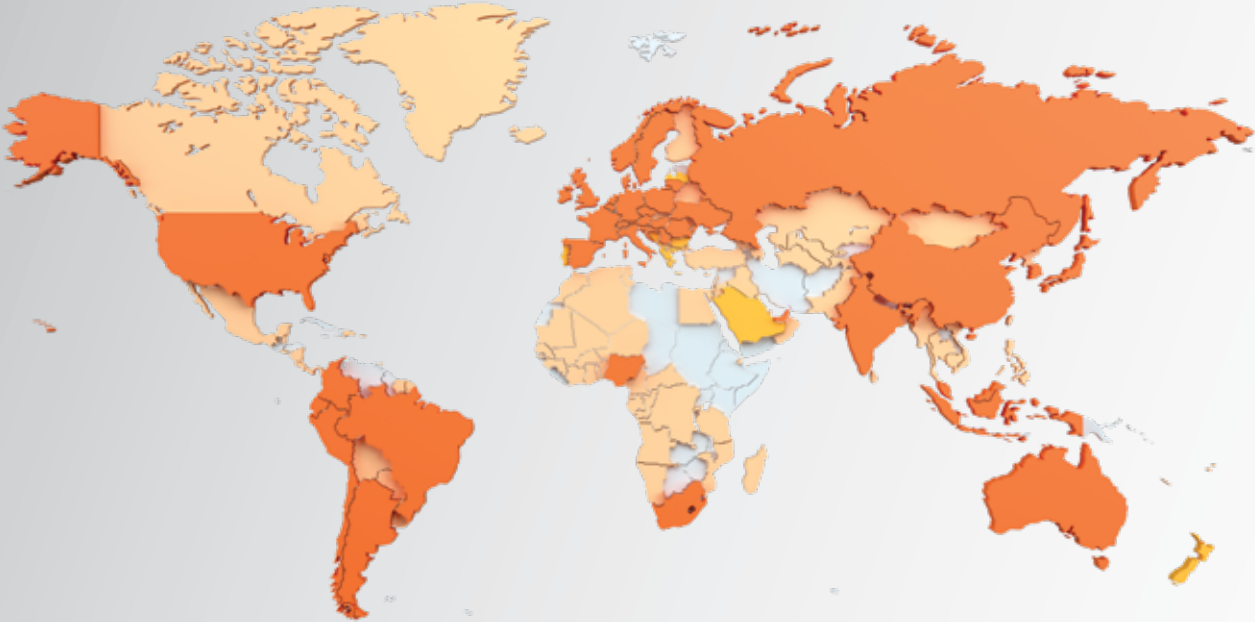
Find out more on www.etexgroup.com

Road to Sustainability

2030

etex inspiring ways
of living

Etex Group worldwide



Etex in Romania



Passive protection against fire and high performance materials for insulation and fire stopping

3

Fire-resistant boards, paints, sprays and passive protection systems against fire for residential, shopping buildings, office and industrial facilities.

Our 5 technologies



Plasterboard

Plasterboard with a fibreglass-reinforced gypsum core whose surfaces and longitudinal edges are coated with a special multi-layer cardboard. For internal and external applications.



Fibre cement

Ventilated facade cladding for residential and public buildings, cladding for the agricultural industry and fibre cement products for patios and floors.



Systems and solutions

Lightweight steel structure solutions and high-density, wood-fibre boards for quick and easy on-site construction.



Insulation products

Glass mineral wool and extruded polystyrene (XPS), two high-performance products that guarantee excellent insulation quality for building envelope, interior partitions, floors, ceilings and air conditioning ducts.



Building a better and more sustainable world

What does sustainability mean for Etex?

Our ambition is to help transform industry by



... social engagement. Providing equal opportunities for all employees.



... raising awareness of climate change in line with the world's urgent needs.



... pro-nature behaviour through **business models integrating circular principles.**



...the constant quest to build safer and healthier workplaces.

Our fields and priority goals

OUR DAILY GOALS



Health, safety and welfare

- 0 deaths
- 0 damage
- 0 professional burnout

GOALS FOR THE YEAR 2025



Commitment to customers

Development of a sustainable action plan for each product



Diversity, equity and inclusion

- Inform all Etex employees about **internal policies and procedures on diversity, social equity and inclusion**
- **Train all teams** on diversity, social equity and inclusion
- **Eliminate gender pay gap**

GOALS FOR THE YEAR 2030



Decarbonisation

Reduce greenhouse gas emissions (Scope 1 and 2 intensity) by **35%**¹



Circularitate

- Use of **more than 20% of circular resources as raw material**¹
- **Zero waste to landfill**
- Using **100% recyclable packaging**; reducing plastic packaging by 20%
- Offering a take-back service for our materials in **80% of our partner** countries in Europe
- Redirecting **50%** of our innovation resources to **sustainability**



Join us on the road to sustainability

Local actions:

Gypsum plasterboards produced at Turceni are sold without wrapping.

Since 2022, Siniat has been phasing out plastic foils used for packaging, accounting for 66,000 kg of plastic "Over the past few years we have been at the forefront of building material manufacturers promoting the reduction of plastic packaging.

We are proud that we have been able to phase out the plastic foil used to package plasterboard pallets at the Siniat Turceni factory."

Andrei Popa, Country Sales Manager Romania & SEE region

In 2023 we completed testing of our product range: building plasters, universal plasters, gypsum-based plasters as well as levelling, jointing and finishing plasters to determine their VOC emission levels, thus demonstrating their positive impact on the indoor environment in construction.

The tests were carried out by one of the leaders in such EUROFINS testing and resulted in Indoor Air Comfort GOLD and LEED v4 & v4.1BETA certification.

Siniat Environmental Product Declarations (EPDs) show the environmental impact of products, helping to achieve sustainable construction in the new design context according to nZEB requirements.

From the beginning of 2023 we started to progressively use low chassis vehicles for transport to reduce CO₂ pollution.

Our goal is that in the next 5 years all transport will be done with such vehicles.

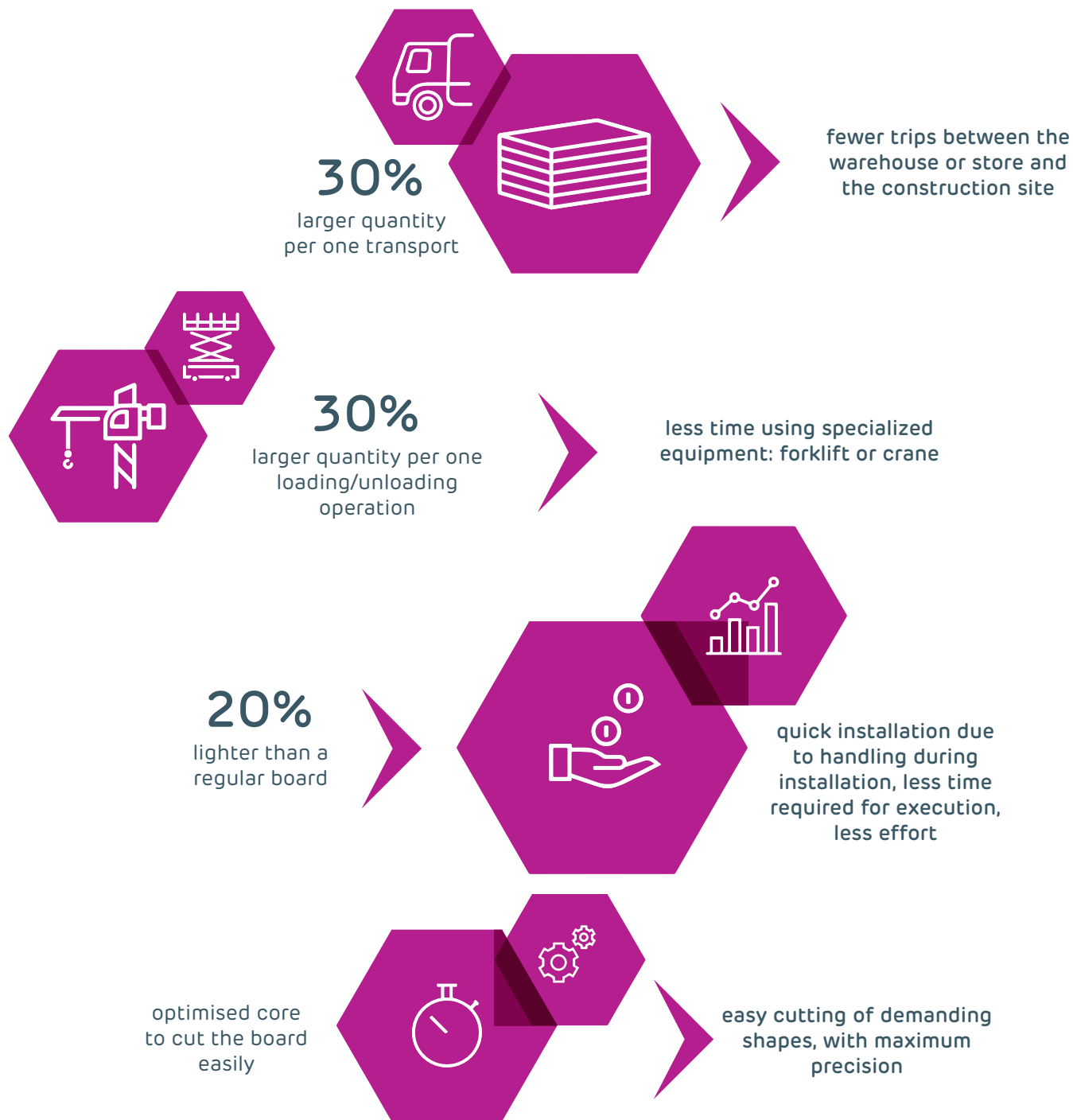


Etex is among the leading 25% companies assessed by EcoVadis.

Etex's goal is to build a better and more sustainable future in a smart and innovative way over the next 7 years and our priorities are to use as much raw material as possible from the circular economy. Our target is to use 20% more raw material from recycling compared to 2018 levels and to reduce non-recyclable waste to zero by 2030.

Benefits and advantages of the Smart KIT package

More efficiency in the performance of drywall works



Note:

Quantities are calculated for a complete truck of Smart A 12.5 1200x2600 boards (maximum permitted mass: 40t). Thanks to the optimised core, the weight of a Smart board is more efficient and thus allows loading on a truck of up to 30% more than a conventional board of the same type.



Smart KIT Package

Complete product range

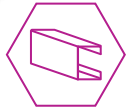
Work faster, easier, and more efficiently with the **Smart KIT Package** dedicated to any drywall work

SINIAT Smart A plasterboard



Light and strong A-type plasterboard with fiberglass reinforced core, for applications in dry indoor spaces, for works requiring a short performance time.

Smart Metal profiles



Profiles stiffened by embossing, UD30, CD60, CW50, CW75, CW100, UW50, UW75 and UW100 type, 0.5 mm thick.

SINIAT Smart H plasterboard



H-type plasterboard, having a core with additives, for applications in indoor spaces with intermittent humidity: bathrooms, kitchens, home technical spaces.

Smart Top plaster



Plaster for joining and finishing plasterboards. Due to the short working time, Smart Top is the perfect solution for applications in small construction sites and for renovations.

SINIAT Smart F plasterboard



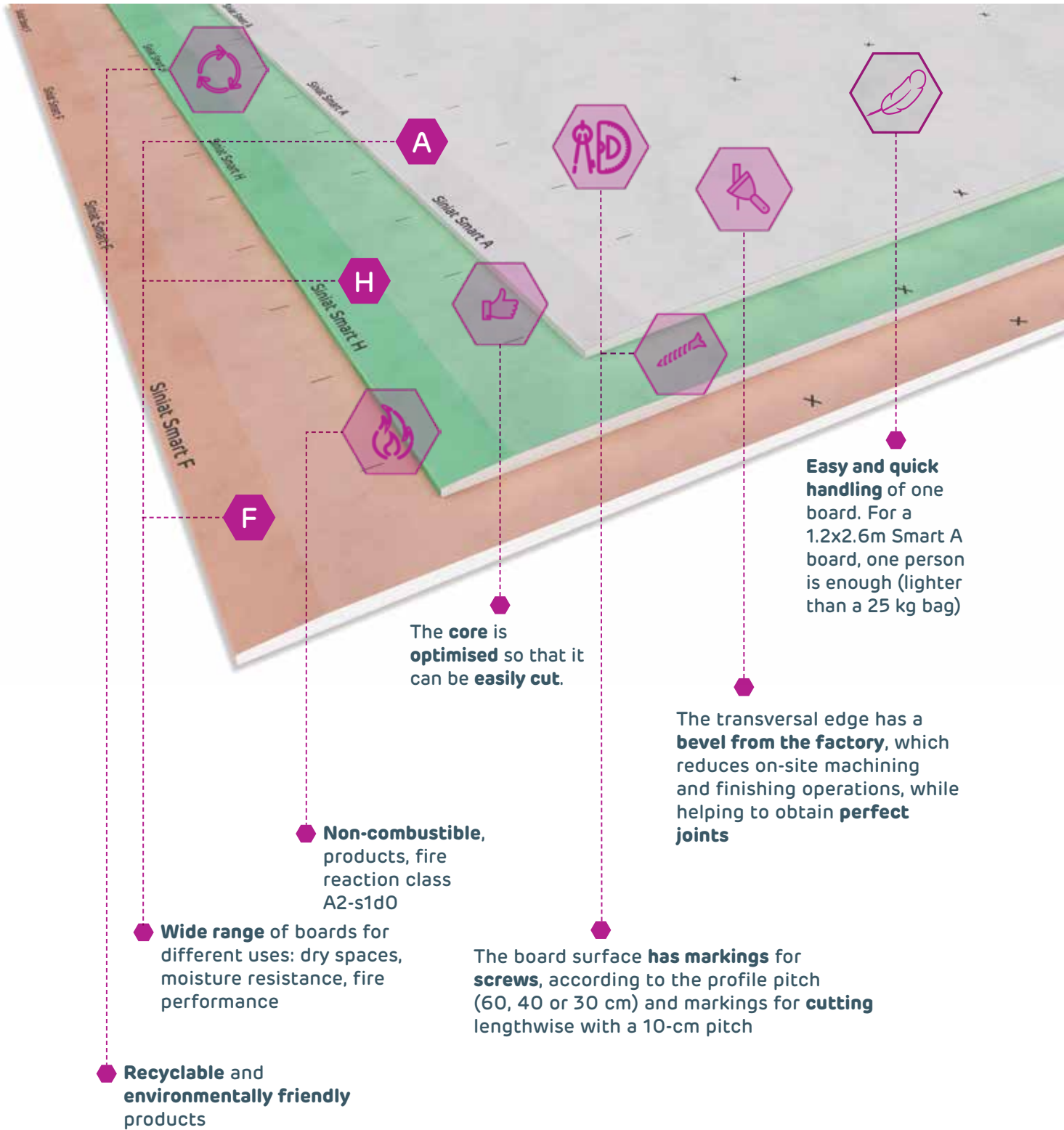
F-type plasterboard, having a core cohesion improved at high temperatures. It is ideal for use in partitioning projects requiring fire resistance.

Smart range products are certified and tested according to European standards and legislation.

Compatibility with accessories in the SINIAT portfolio provides higher guarantee to drywall works.

COMPLETE THE MATERIAL REQUIREMENTS WITH ACCESSORIES FOR SINIAT DRYWALL





Plasterboards in the Smart range

Smart boards are the ideal solution for small and medium-sized works requiring short working time. The full range of **Smart** boards is developed and certified in compliance with European standards.

Applications and scope:

Smart boards are ideal for use in a wide range of applications, such as:

- > **Small and medium-sized works** for interior design and partitioning with no special requirements (interior walls, ceilings, and decorative soffits or for cladding concrete, masonry, wood items)
- > **Home applications:** partition walls between spaces of an apartment, closure of pipe ducts, dry renderings for concrete and masonry items
- > Improvement and modernisation of spaces in **office buildings** requiring a short working time
- > Various drywall applications (walls, cladding and ceilings) in **new buildings** or **renovation of existing ones**.



Smart A

- > for interior design works in dry spaces (normal relative humidity, maximum 60%)
- > columns, curved walls, archways having a minimum radius of 1 m (for Smart A 9.5 board)
- > corrections or repairs of existing drywall systems
- > various drywall applications with no fire or moisture resistance requirements: indoor walls, cladding concrete, masonry, wood items, or for making ceilings and decorative soffits

Smart H

- > for interior design works in dry spaces and in spaces with intermittent moderate humidity (e.g. kitchen, bathroom, technical space)
- > exceptional finishes, decorative elements, substrate for classical ceramic tiling
- > closings the walls of pipe ducts, closing elements for various objects in bathrooms and kitchens (e.g. closing bathtub mask, shower tub mask etc.)

Smart F

- > for design works intended for fire safety in dry spaces (normal relative humidity, maximum 60%)
- > indoor non-structural partition walls with fire resistance up to EI90.

Product	Board colour	Width (mm)	Length (mm)	Thickness (mm)	Board weight (kg)	No. of boards per palet (pcs.)
Smart A 9.5	white	1200	2000	9.5	13.70	92
		1200	2500	9.5	16.80	92
		1200	2600	9.5	17.50	92
Smart A 12.5	white	1200	2000	12.5	15.60	72
		1200	2500	12.5	19.50	72
		1200	2600	12.5	20.30	72
		1250	2000	12.5	16.25	72
Smart H 12.5	green	1200	2000	12.5	16.80	72
		1200	2500	12.5	21.00	72
		1200	2600	12.5	21.84	72
		1250	2000	12.5	17.50	72
Smart F 12.5	pink	1200	2000	12.5	19.70	68
		1200	2500	12.5	24.60	68
		1200	2600	12.5	25.60	68



Profiles

Smart Metal

Smart Metal profiles have an embossed surface made by passing the zinc plated steel sheet through toothed rollers; they print a SINIAT characteristic pattern which increases the strength of the profile.

Advantages

- > Higher strength compared to smooth profiles of similar size
- > Smart CW support type profiles are punched in the factory with holes for drawing wiring 100% compatibility with the SINIAT system of accessories
- > Better joining of CW and UW profiles
- > The profile embossing type ensures better contact of the boards with the profiles
- > The embossed pattern prevents the profiles from slipping, making their handling and storage easier

List of SMART profiles

Product	Profile depth [mm]	Drywall application type			Profile type	
		Wall	Cladding	Ceiling	Guide	Support
UD30	30		*	*	*	
CD60	60		*	*		*
CW50	50	*	*			*
CW75	50	*	*			*
CW100	75	*	*			*
UW50	75	*	*		*	
UW75	100	*	*		*	
UW100	100	*	*		*	

TIPS & TRICKS

Always use **FLAT HEAD** screws to fasten profiles and accessories with each other. Thanks to the super flat head, it does not deform the plasterboard and prevents cracking.



For **good soundproofing**, do not forget to provide the drywall profiles, which are in contact with other items, such as concrete ceiling or masonry wall, with **single-adhesive sealing tape** on the contact side.



Finishings

Smart Top

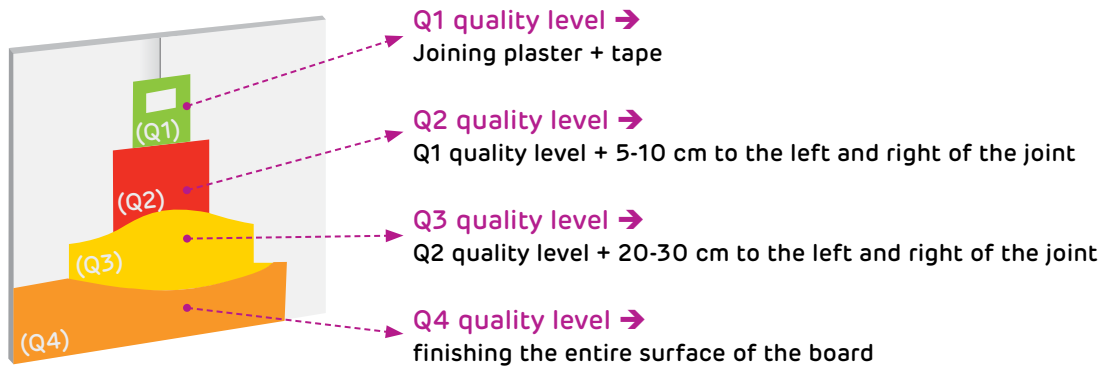
Smart Top is a white plaster-based mineral powder, pre-mixed with mineral additions and professional-grade additives to ensure increased adhesion and plasticity. In combination with water, a homogeneous paste is obtained, with optimal working time and higher workability.

Advantages

> **Smart Top** is used for levelling and finishing joints between plasterboards.

> Thanks to the optimal working time, it is the perfect solution for applications in small construction sites and for renovations.

Detail for the finishing levels



Jointing and finishing system for SMART drywall applications

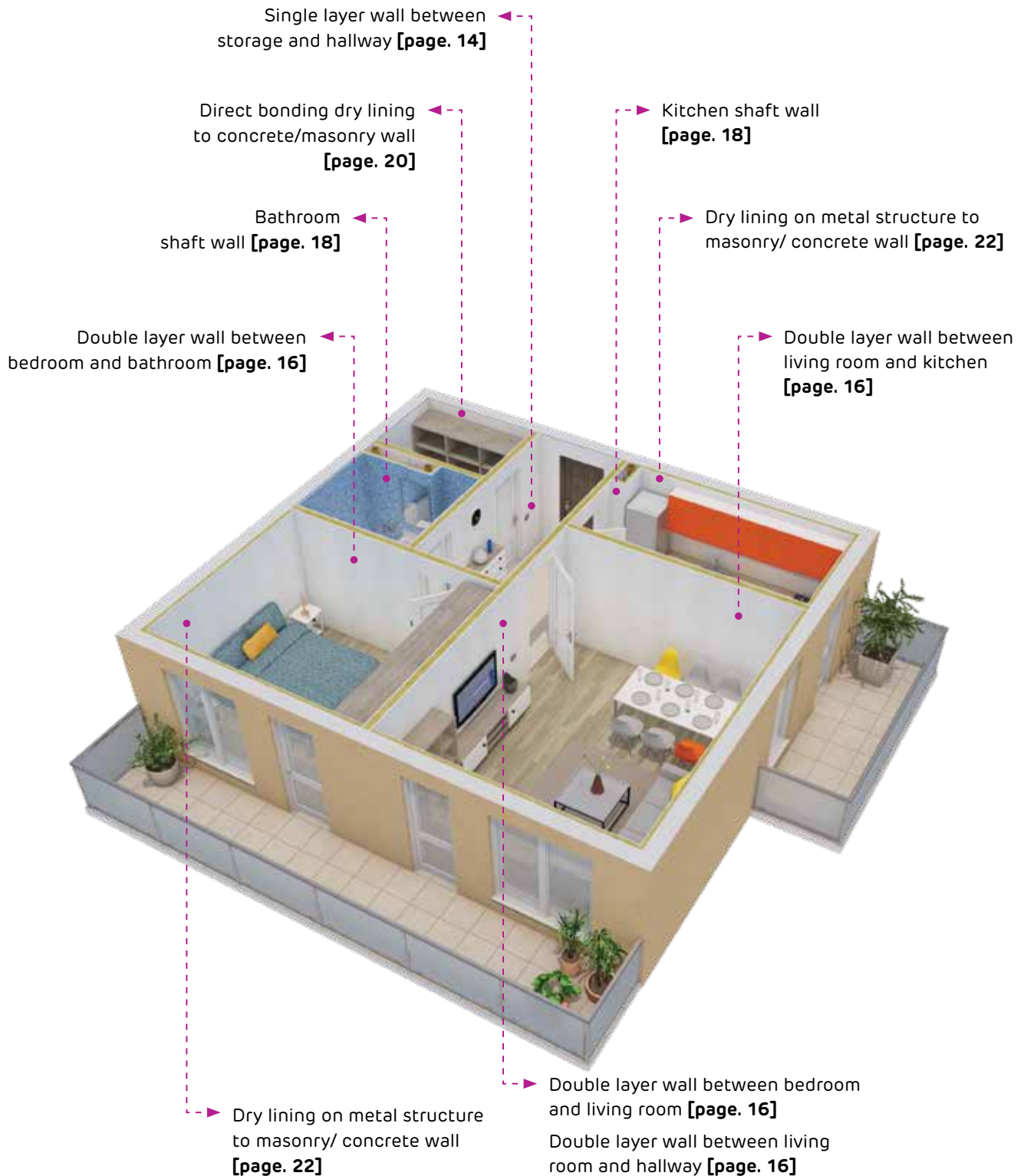




Find out ideas to
renovate the house using
drywall solutions



Smart KIT Advantages



Being able to reconfigure the space according to the needs is an important factor in the current trends of society, for both homes in a new building and existing homes. Home rehabilitation or modernisation requires a series of well-coordinated building and placing processes and measures. Smart KIT provides an easier, simpler, and less invasive alternative to traditional solutions.

By using the Smart KIT package, a wide range of drywall applications can be made: indoor partition walls for the rooms in the home, closing walls for pipe ducts, cladding of massive closing items, such as masonry walls or reinforced concrete floors, being possible to integrate and mask thermal installation or wiring lay-outs.

Smart KIT has multiple advantages over traditional solutions, such as: ease and speed of performance during installation, quickly and easily obtaining architectural forms, and the ability to subsequently reconfigure and modernise spaces. Moreover, being much lighter than a traditional item (e.g. an indoor masonry wall), such application has a much lower impact on the building's construction system. Another important feature of gypsum (main material for manufacturing plasterboard) is its ability to regulate humidity in a room, because it is a hygroscopic material, creating spaces which provide quality for a healthy and comfortable living environment.

Comparison between various ways of making an indoor non-load-bearing wall to separate home spaces

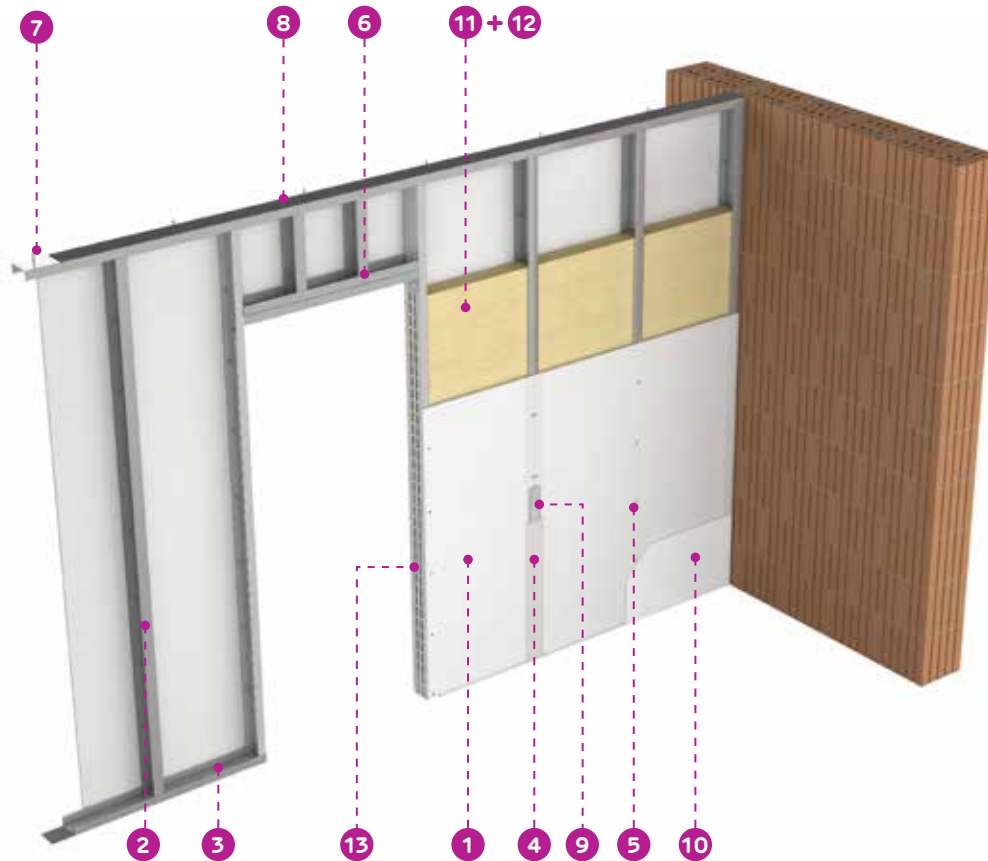
Indoor partition wall type	Total wall thickness [cm]	Soundproofing index R_w [dB]	Wall weight [kg/m ²]	Total wall weight Area = 10 m ² size: H = 2.5 m, L = 4.0 m [kg]
11.5 cm thick ceramic block brick wall rendered on both sides (rendering layer: 1 cm)	13,5	42	119	1190
Wall made of 10 cm thick autoclaved cellular concrete blocks rendered on both sides (rendering layer: 1 cm)	12,0	36	78	780
Wall of double cladded Smart drywall with Smart A 12.5 on a Smart Metal CW/UW50 profile structure, finished (Q4 grade – the entire surface) with Adera Liss with wool inside	10,2	49	30	300
Wall of double cladded Siniat drywall with Nida Acoustic 12.5 on a Nida Metal CW/UW50 profile structure, finished (Q4 grade – the entire surface) with Adera Liss and wool inside	10,2	56	48	480



PARTITION WALL FOR TECHNICAL SPACES/STORAGE

Single layer wall

To separate spaces with a secondary role in a home (storage, pantry, dressing room, technical space), walls of **Smart** drywall can be made with a single layer of board on each side.



- | | |
|---|--|
| 1 Smart plasterboard 12.5 | 8 Single-adhesive sealing tape |
| 2 Smart Metal CW support profile | 9 Joint tape |
| 3 Smart Metal UW guide profile | 10 Adera Liss finishing skim coat |
| 4 Smart Top joint plaster | 11 Mineral wool |
| 5 Self-tapping screw 212 x 25 | 12 Mineral wool clips |
| 6 Flat Head drywall screw 4.2 x 13 | 13 Hollow door frame – Nida Metal UA solution |
| 7 Mechanical fastening ^(*) (e.g. dowel for masonry or concrete) | |



Wall configurations

SYSTEM TYPE	SYSTEM THICKNESS [mm]	SMART METAL SUPPORT [thickness 0.5 mm]	INTERAXIS SUPPORT [mm]	BOARD TYPE	SOUNDPROOFING Rw[dB]	MAXIMUM HEIGHT [m]
					12.5 mineral wool kg/m ³ , 50 mm	
D75	75	CW50	600	2x1 Smart A 12.5	37	2.63
D75	75	CW50	400	2x1 Smart A 12.5	37	3.44
D100	100	CW75	600	2x1 Smart A 12.5	40	3.65
D100	100	CW75	400	2x1 Smart A 12.5	40	4.86
D125	125	CW100	600	2x1 Smart A 12.5	41	4.05
D125	125	CW100	400	2x1 Smart A 12.5	41	5.00

Determine the material requirements in a simple rapid manner

Build together with SINIAT







Note:

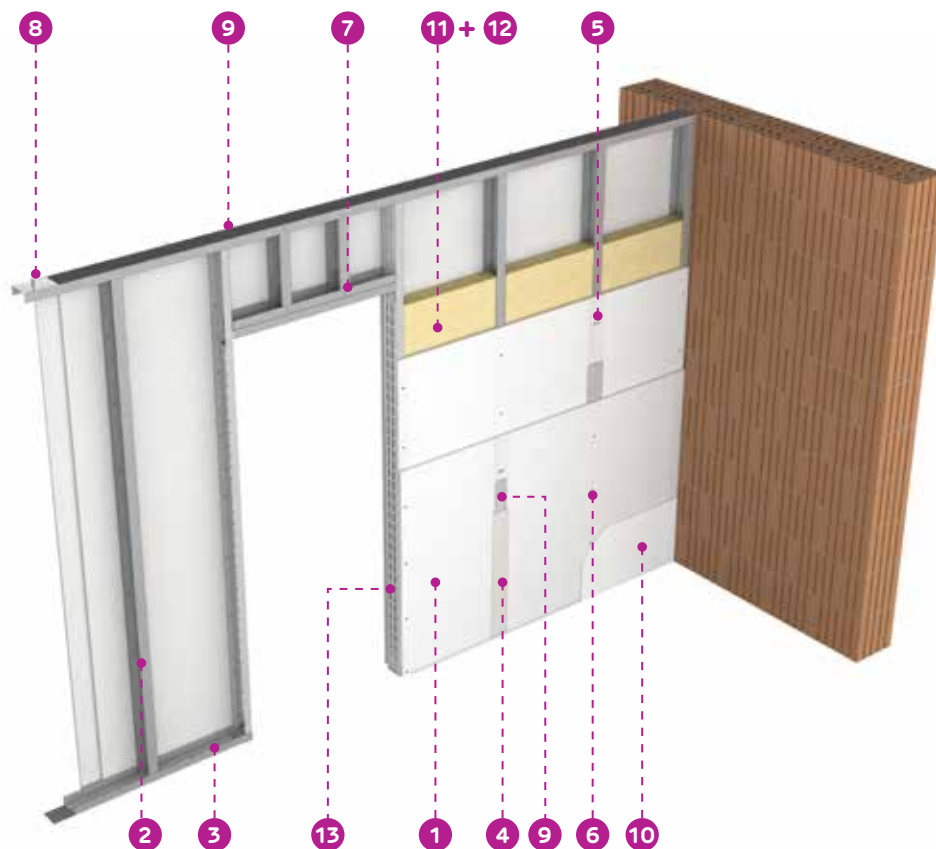
- (1) The Smart A 12.5 board should be used only in dry spaces with normal humidity. For applications in wet spaces (such as: bathrooms, kitchens etc.), it is necessary to use the Smart H 12.5 plasterboard.
- (2) Instead of Adera Liss, ready-made paste can instead be used: NIDA Readymix Profesional or NIDA Excellence.
- (3) Finishing skim coat (Adera Liss, NIDA Readymix Profesional, Nida Excellence) for Q4 degree applied in thickness of 1-2 mm.

PARTITION WALL BETWEEN ROOMS

Double layer wall

The separation of two living spaces (e.g. bedroom - bedroom or living room - bedroom) by a partition made of **Smart** plasterboard is an efficient solution in such works.

The double layer cladding on each side of the wall assures mechanical strength over time, and inserting a wool layer increases soundproofing. For better soundproofing, use Nida Acoustic or LaDura boards.



- | | |
|------------------------------------|--|
| 1 Smart plasterboard 12.5 | 8 Mechanical fastening ^(*) (e.g. dowel for masonry or concrete) |
| 2 Smart Metal CW support profile | 9 Single-sided adhesive sealing tape |
| 3 Smart Metal UW guide profile | 10 Adera Liss finishing skim coat |
| 4 Smart Top joint plaster | 11 Mineral wool |
| 5 Self-tapping screw 212 x 25 | 12 Mineral wool clips |
| 6 Self-tapping screw 212 x 45 | 13 Hollow door frame – Nida Metal UA solution |
| 7 Flat Head drywall screw 4.2 x 13 | |



Wall configurations

SYSTEM TYPE	SYSTEM THICKNESS [mm]	SMART METAL SUPPORT [thickness 0.5 mm]	INTERAXIS SUPPORT [mm]	BOARD TYPE	SOUNDPROOFING Rw[dB]	MAXIMUM HEIGHT [m]
					12.5 mineral wool kg/m ³ , 50 mm	
D100	100	CW50	600	2x2 Smart A 12.5	47	3.65
D100	100	CW50	400	2x2 Smart A 12.5	46	4.05
D125	125	CW75	600	2x2 Smart A 12.5	50	4.66
D125	125	CW75	400	2x2 Smart A 12.5	49	5.00
D150	150	CW100	600	2x2 Smart A 12.5	51	5.00
D150	150	CW100	400	2x2 Smart A 12.5	50	5.00

Determine the material requirements in a simple rapid manner

Build together with SINIAT







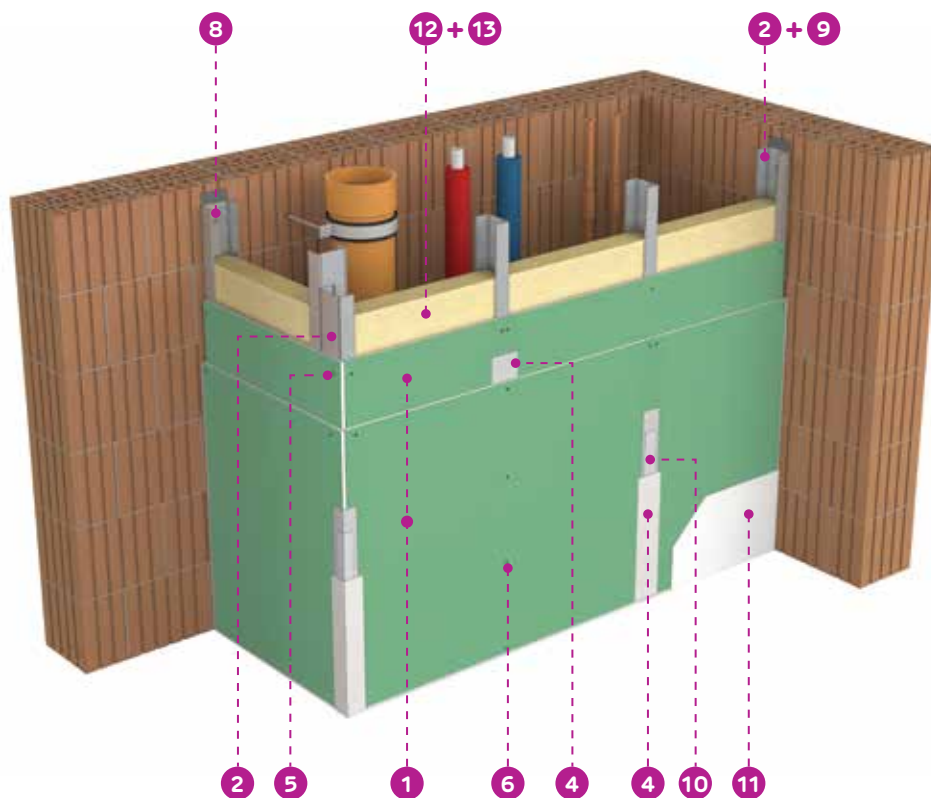
Note:

- (1) The Smart A 12.5 board should be used only in dry spaces with normal humidity. For applications in wet spaces (such as: bathrooms, kitchens etc.), it is necessary to use the Smart H 12.5 plasterboard.
- (2) Instead of Adera Liss, ready-made paste can instead be used: NIDA Readymix Profesional or NIDA Excellence.
- (3) Finishing skim coat (Adera Liss, NIDA Readymix Profesional, Nida Excellence) for Q4 degree applied in thickness of 1-2 mm.

PIPE DUCT WALL

Double lining shaft wall

To make a quick closure of a technical space, where are located the water and drainage pipes or ventilation ducting, a **Smart** cladding can be implemented on a stand-alone drywall structure. Double-layer cladding is recommended due to the mechanical strength provided, while ensuring an adequate support for ceramic tiling.



- | | |
|---|---|
| 1 Smart plasterboard 12.5 | 9 Single-sided adhesive sealing tape |
| 2 Smart Metal CW support profile | 10 Joint tape |
| 4 Smart Top joint plaster | 11 Adera Liss finishing skim coat |
| 5 Self-tapping screw 212 x 25 | 12 Mineral wool |
| 6 Self-tapping screw 212 x 45 | 13 Mineral wool clips |
| 8 Mechanical fastening ^(*) (e.g. dowel for masonry or concrete) | |



Wall configurations

SYSTEM TYPE	SYSTEM THICKNESS [mm]	SMART METAL SUPPORT [thickness 0.5 mm]	INTERAXIS SUPPORT [mm]	BOARD TYPE	MAXIMUM HEIGHT [m]
SH.CW.I. 75	75	CW50	600	2x Smart A 12.5	2.75
SH.CW.I. 75	75	CW50	400	2x Smart A 12.5	2.95
SH.CW.I. 75	75	CW50	300	2x Smart A 12.5	3.20
SH.CW.I. 100	100	CW75	600	2x Smart A 12.5	3.55
SH.CW.I. 100	100	CW75	400	2x Smart A 12.5	3.85
SH.CW.I. 100	100	CW75	300	2x Smart A 12.5	4.20
SH.CW.I. 125	125	CW100	600	2x Smart A 12.5	4.10
SH.CW.I. 125	125	CW100	400	2x Smart A 12.5	4.45
SH.CW.I. 125	125	CW100	300	2x Smart A 12.5	4.85

Determine the material requirements in a simple rapid manner

Build
together with
SINIAT



For easy access in case of maintenance, it is recommended to install an inspection hatch.

The hatches in the Siniat portfolio are dedicated to such applications.

Inspection hatches

SAP Code	Size [mm]	Weight [kg]
4047293	200 x 200	0.84
4043259	300 x 300	1.42
4043260	400 x 400	2.19
4043261	500 x 500	3.13
4043262	600 x 600	4.26
4074320	700 x 700	5.57
4074321	900 x 900	10.21

Note:

- (1) The Smart A 12.5 board should be used only in dry spaces with normal humidity. For applications in wet spaces (such as: bathrooms, kitchens etc.), it is necessary to use the Smart H 12.5 plasterboard.
- (2) Instead of Adera Liss, ready-made paste can instead be used: NIDA Readymix Profesional or NIDA Excellence.
- (3) Finishing skim coat (Adera Liss, NIDA Readymix Profesional, Nida Excellence) for Q4 degree applied in thickness of 1-2 mm on each side.



www.youtube.com/user/SiniatRomania



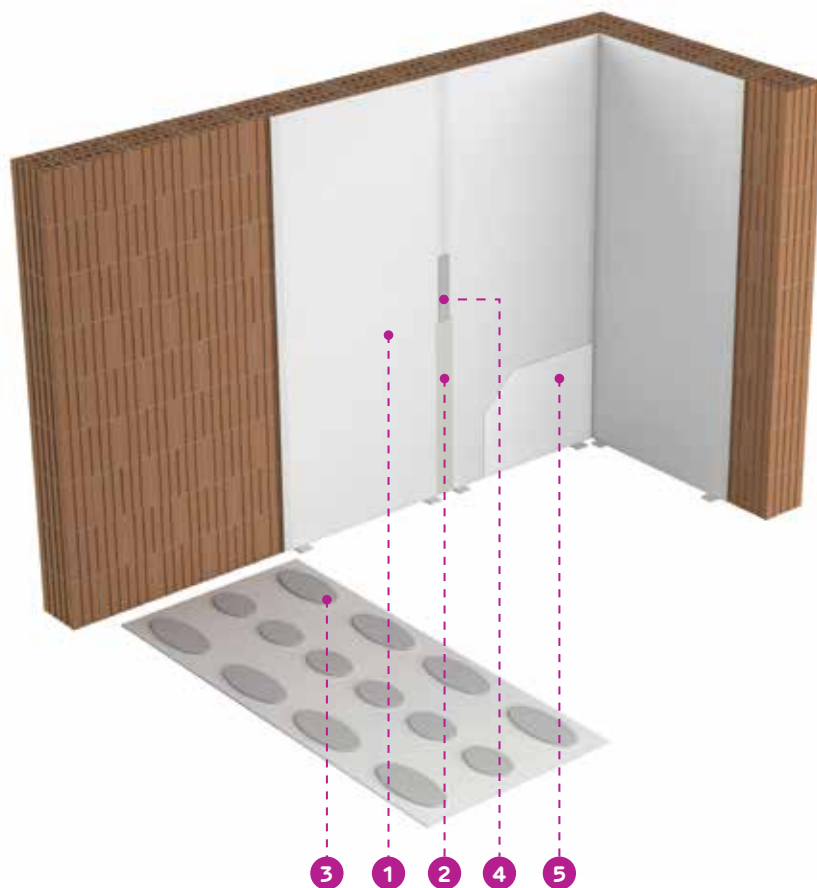
www.facebook.com/siniat.romania

SMART PRODUCT AND
APPLICATION RANGE

DIRECT BONDED DRY LINING TO MASONRY/CONCRETE WALL

Simple lining by bonding

Masonry or concrete walls can be finished by a **Smart** drywall cladding fastened with NIDA Boardfix adhesive plaster. Compared to the classic solutions, which require a long time for drying and specialized application, this finishing option is quick and easy.



- 1 12.5 Smart plasterboard
- 2 Smart Top joint plaster
- 3 Boardfix adhesive plaster
- 4 Joint tape
- 5 Adera Liss finishing skim coat



Wall configurations

SYSTEM TYPE	ADHESIVE TYPE	DISTANCE BETWEEN POINTS OF APPLICATION OF ADHESIVE ON THE BOARD		BOARD TYPE	MAXIMUM HEIGHT [m]
		Horizontal [mm]	Vertically [mm]		
Cladding by bonding	Nida Boardfix	400	300	1x Smart A 12.5	3.00

Determine the material requirements in a simple rapid manner



NIDA Boardfix adhesive plaster

Performance and benefits:

- ✓ very good adhesion to the substrate
- ✓ high mechanical strength
- ✓ long working time

Applications:

- ✓ drywall cladding on substrates of AAC, brick, concrete, rendering (cement, lime-cement, plaster);
- ✓ bonding insulating panels, repairing cracks or filling joints with thicknesses greater than 3 mm

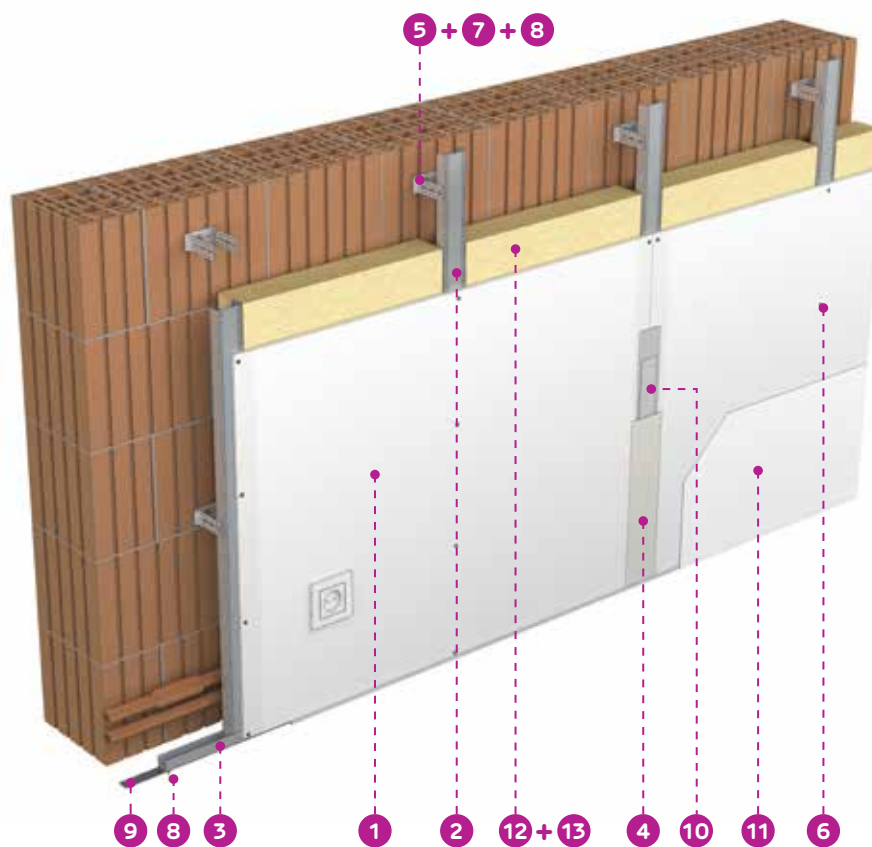
Note:

- (1) The Smart A 12.5 board should be used only in dry spaces with normal humidity. For applications in wet spaces (such as: bathrooms, kitchens etc.), it is necessary to use the Smart H 12.5 plasterboard.
- (2) Instead of Adera Liss, ready-made paste can instead be used: NIDA Readymix Profesional or NIDA Excellence.
- (3) Finishing skim coat (Adera Liss, NIDA Readymix Profesional, Nida Excellence) for Q4 degree applied in thickness of 1-2 mm.

DRY LINING ON METAL STRUCTURE TO MASONRY/CONCRETE WALL

Single lining on metal structure

Dry rendering made in the form of **Smart** cladding on a metal structure allows easily hiding the installations in the home (electrical wiring and heating system pipes).



- | | |
|---|---|
| 1 Smart plasterboard 12.5 | 8 Mechanical fastening ^(*) (e.g. dowel for masonry or concrete) |
| 2 Smart Metal CD support profile | 9 Single-sided adhesive sealing tape |
| 3 Smart Metal UD Guide profile | 10 Joint tape |
| 4 Smart Top joint plaster | 11 Adera Liss finishing skim coat |
| 5 Adjustable bracket | 12 Mineral wool |
| 6 Self-tapping screw 212 x 25 | 13 Mineral wool clips |
| 7 Flat Head drywall screw 4.2 x 13 | |



Wall configurations

SYSTEM TYPE	SMART METAL SUPPORT		VERTICAL FIXINGS		BOARD TYPE	SOUNDPROOFING Rw - 10 cm masonry wall with cladding on one side	MAXIMUM HEIGHT [m]
	Tip type [thickness 0.5 mm]	Interaxis [mm]	Siniat bridle type	Interaxis		Mineral wool 12.5 kg/m ³ , 50 mm	
T.CD 42.5_BR	CD60	600	Adjustable bracket	1250	1x Smart A 12.5	44	No restriction
T.CD 42.5_BR	CD60	400	Adjustable bracket	1250	1x Smart A 12.5	44	No restriction
T.CD 42.5_BA	CD60	600	Acoustic bracket	1250	1x Smart A 12.5	47	No restriction
T.CD 42.4_BA	CD60	400	Acoustic bracket	1250	1x Smart A 12.5	47	No restriction

Determine the material requirements in a simple rapid

Build
together with
SINIAT





To fasten CD60 profiles on the support structure (concrete or masonry wall), NIDA METAL ADJUSTABLE BRACKET should be used.



If you also want soundproofing, we recommend 60/125 NIDA METAL ADJUSTABLE BRACKET and Nida Acoustic plasterboard

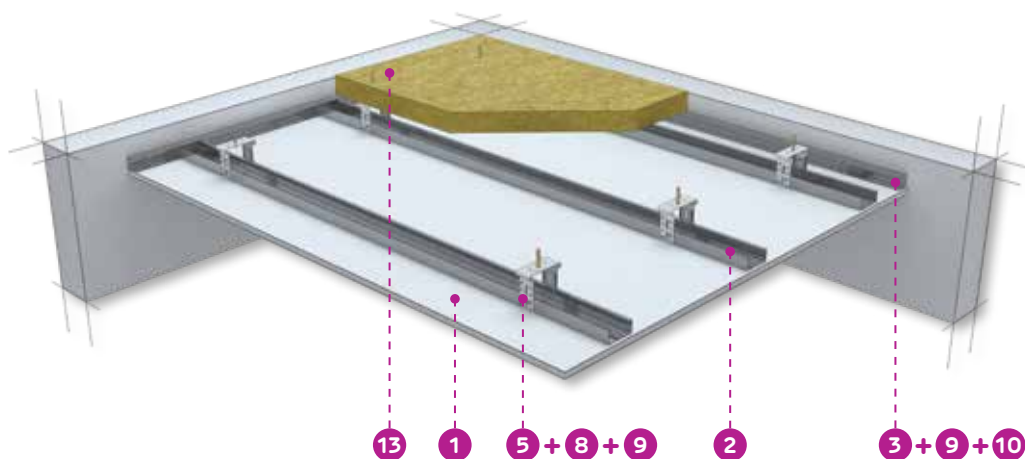
Note:

- (1) The Smart A 12.5 board should be used only in dry spaces with normal humidity. For applications in wet spaces (such as: bathrooms, kitchens etc.), it is necessary to use the Smart H 12.5 plasterboard.
- (2) Instead of Adera Liss, ready-made paste can instead be used: NIDA Readymix Profesional or NIDA Excellence.
- (3) Finishing skim coat (Adera Liss, NIDA Readymix Profesional, Nida Excellence) for Q4 degree applied in thickness of 1-2 mm.

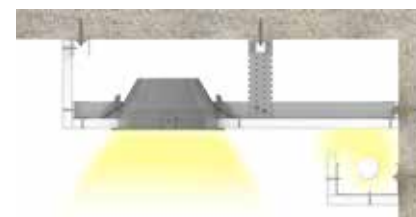
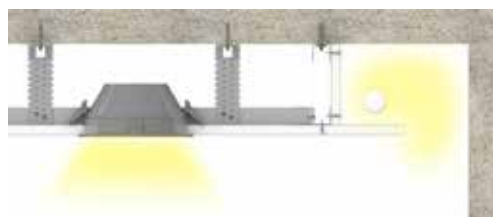
SUSPENDED CEILING

Descent of maximum 12 cm against the supporting structure

Drywall ceilings are a quick and simple solution to make the finishing of the intrados of a concrete ceiling, while allowing to easily lay and mask the electric wiring.



When making soffits to fasten the profiles with each other, use **FLAT HEAD** screws to prevent the deformation of the boards and cracking.



- | | |
|---|---|
| 1 Smart plasterboard 12.5 | 8 Flat Head drywall screw 4.2 x 13 |
| 2 Smart Metal CD support profile | 9 Mechanical fastening ^(*) (e.g. dowel for masonry or concrete) |
| 3 Smart Metal UD Guide profile | 10 Single-sided adhesive sealing tape |
| 5 Adjustable bracket | 13 Mineral wool |



Wall configurations

APPLICATION TYPE	STRUCTURE		SUSPENSION ITEMS		BOARD TYPE	SOUNDPROOFING
	Profile type [thickness 0.5 mm]	Interaxis [mm]	Siniat bridle type	Interaxis		Rw[dB] Reinforced concrete ceiling 120 mm
P1.S1.CD/UD_BR	CD60	400	Adjustable bracket	1300	1x Smart A 12.5	61
P1.S1.CD/UD_BR	CD60	500	Adjustable bracket	1200	1x Smart A 12.5	61
P1.S1.CD/UD_BA	CD60	400	Acoustic bracket	1300	1x Smart A 12.5	63
P1.S1.CD/UD_BA	CD60	500	Acoustic bracket	1200	1x Smart A 12.5	63

Determine the material requirements in a simple rapid manner



The treatment of joints between plasterboards can be made quickly and easily with CONNECT TAPE. At the same time, the tape helps prevent cracking in this area over time.

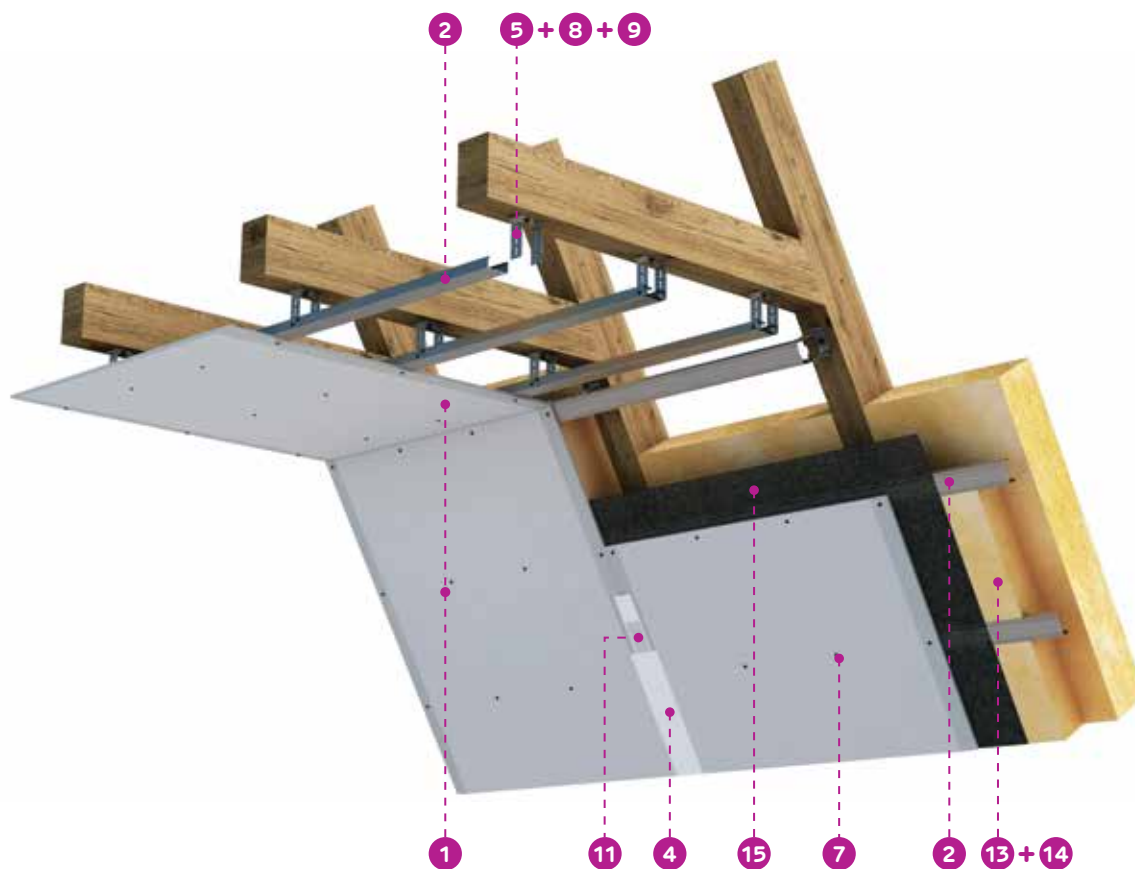
Note:

- (1) The Smart A 12.5 board should be used only in dry spaces with normal humidity. For applications in wet spaces (such as: bathrooms, kitchens etc.), it is necessary to use the Smart H 12.5 plasterboard.
- (2) Instead of Adera Liss, ready-made paste can instead be used: NIDA Readymix Profesional or NIDA Excellence.
- (3) Finishing skim coat (Adera Liss, NIDA Readymix Profesional, Nida Excellence) for Q4 degree applied in thickness of 1-2 mm.

SUSPENDED CEILING TO CLOSE THE ATTIC

Fastening on wooden structure

When finishing an attic, one shall make sure the materials used are non-combustible. The **Smart** solution for closing and finishing the attic is simple and fast. It is subject to the combustibility class A2-s1d0 (non-combustible).



- | | |
|------------------------------------|---|
| 1 Smart plasterboard | 9 Mechanical fastening ^(*) (e.g. hexagonal wood screw) |
| 2 Smart Metal CD support profile | 11 Joint tape |
| 4 Smart Top joint plaster | 13 Mineral wool |
| 5 Adjustable bracket | 14 Mineral wool |
| 7 Self-tapping screw 212 x 25 | 15 Vapour barrier (e.g. Intello Plus - ProClima) |
| 8 Flat Head drywall screw 4.2 x 13 | |



Wall configurations

APPLICATION TYPE	STRUCTURE		SUSPENSION ITEMS		BOARD TYPE
	Profile type [0.5 mm thickness]	Interaxis [mm]	Siniat bridle type	Interaxis ⁽⁴⁾	
P1.S1.CD/UD_BR	CD60	400	Adjustable bracket	1300	1x Smart A 12.5
P1.S1.CD/UD_BR	CD60	500	Adjustable bracket	1200	1x Smart A 12.5
P1.S1.CD/UD_BA	CD60	400	Acoustic bracket	1300	1x Smart A 12.5
P1.S1.CD/UD_BA	CD60	500	Acoustic bracket	1200	1x Smart A 12.5

Determine the material requirements in a simple rapid manner



COMFORT TAPE replaces the classic corner profiles; it is specially designed to obtain smooth, straight, and strong corners at different angles.

Note:

- (1) The Smart A 12.5 board should be used only in dry spaces with normal humidity. For applications in wet spaces (such as: bathrooms, kitchens etc.), it is necessary to use the Smart H 12.5 plasterboard.
- (2) Instead of Adera Liss, ready-made paste can instead be used: NIDA Readymix Profesional or NIDA Excellence.
- (3) Finishing skim coat (Adera Liss, NIDA Readymix Profesional, Nida Excellence) for Q4 degree applied in thickness of 1-2 mm.
- (4) The distance between the structural elements of the truss (rafters) should be taken into account; the distance should not exceed the maximum value in the table.

Fire resistant Smart KIT

Smart drywall systems are tested and fire classified according to European standards.

The performance of the systems is certified by the technical approval drawn up and approved in compliance with the Romanian legislation.

Fire-resistant **Smart** range systems are made with **Smart** plasterboard, 0.5 mm thick **Smart Metal** profiles and SINIAT accessories.

- ✓ EI20 wall system
- ✓ EI30 wall system
- ✓ EI45 wall system
- ✓ EI90 wall system



	GROUP OF TESTING LABORATORIES GRYFITLAB
	ul. Prosta 2, Łozienica, 72-100 Goleniów, POLAND tel. (091) 431 82 29, fax (091) 418 97 57, mobile: 607 900 480 www.gryfitlab.com , e-mail: contact@gryfitlab.com

Supplement to classification of fire resistance No. LBO – 112 – KZ/23E

Classified product:

Non-load bearing partition walls type D “SMART KIT” with single steel framework and symmetrical plasterboard lining on both sides

Sponsors:

ETEX BUILDING PERFORMANCE S.A.
Str. Vulturilor No. 98, 030857, Sector 3
Bucuresti, Romania

Prepared by:

Group of Testing Laboratories Gryfitlab
ul. Prosta 2, Łozienica
72-100 Goleniów, Poland

Place and date of issue:

Łozienica, 28.07.2023

Copy No. 1

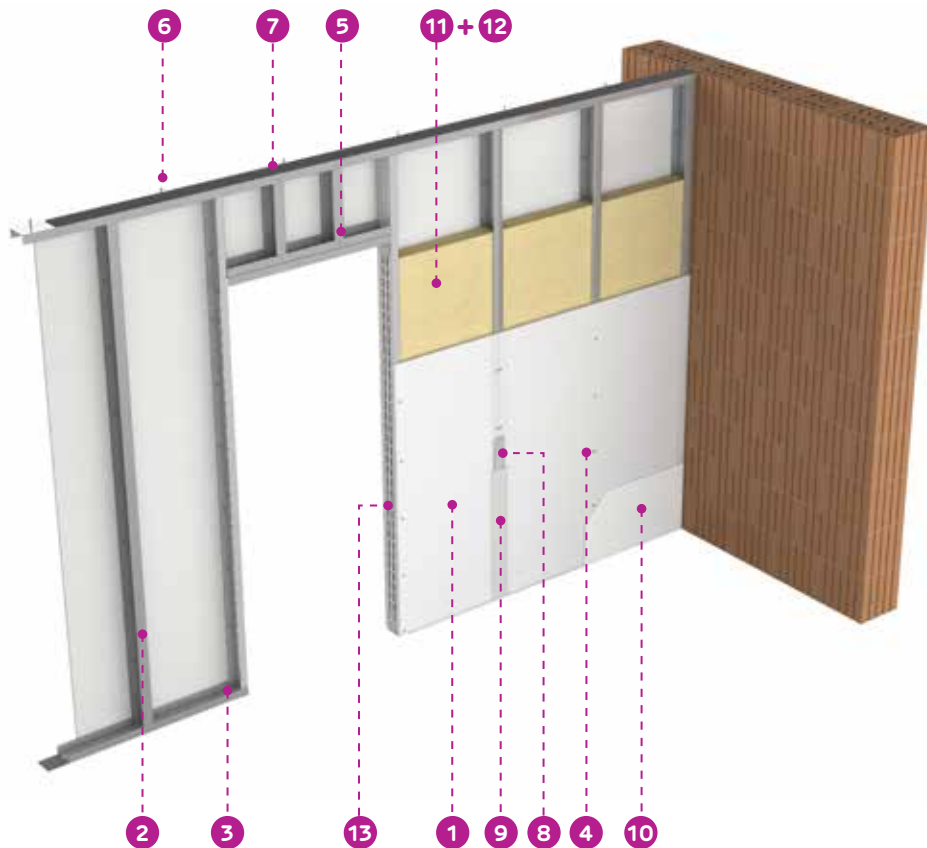
The supplement was printed in 3 copies. Copies No. 1, 2 – for the Sponsor, No. 3 – AA.

GRYFITLAB Sp. z o.o. - ul. Prosta 2, Łozienica - 72-100 Goleniów - Polska - tel.: (48) 91 431 82 45 - fax.: (48) 91 431 82 46
NIP 955-21-28-725, KRS:0000236527, Sąd Rejonowy w Szczecinie, XVII Wydział Gospodarczy KRS, Kapitał zakładowy 1 200 000 PLN



EI20 FIRE-RESISTANT WALL

Single layer wall



- | | |
|---|--|
| 1 Smart plasterboard 12.5 | 8 Joint tape (fiberglass) |
| 2 Smart Metal CW support profile | 9 Smart Top joint plaster |
| 3 Smart Metal UW guide profile | 10 Adera Liss finishing skim coat |
| 4 Self-tapping screw 212x25 | 11 Mineral wool |
| 5 Flat Head drywall screw 4.2x13 | 12 Mineral wool clips |
| 6 Mechanical fastening ^(*) (e.g. metal dowel DN6) | 13 Hollow door frame – Nida Metal UA solution |
| 7 Single-sided adhesive sealing tape | |



System configurations

System type	System thickness [mm]	Smart Metal Support [0.5 mm thickness]	Interaxis support [mm]	Board type	Soundproofing R_w [dB]		Maximum height [m]	
					No mineral wool	With mineral wool	CW single support	CW single support
D75	75	CW50	600	2x1 Smart A 12.5	31	37	2.63	3.44
D75	75	CW50	400	2x1 Smart A 12.5	31	37	3.44	3.65
D75	75	CW50	300	2x1 Smart A 12.5	31	37	4.00	4.00
D100	100	CW75	600	2x1 Smart A 12.5	32	40	3.65	4.00
D100	100	CW75	400	2x1 Smart A 12.5	32	40	4.00	4.00
D100	100	CW75	300	2x1 Smart A 12.5	32	39	4.00	4.00
D125	125	CW100	600	2x1 Smart A 12.5	34	41	4.00	4.00
D125	125	CW100	400	2x1 Smart A 12.5	33	41	4.00	4.00
D125	125	CW100	300	2x1 Smart A 12.5	33	40	4.00	4.00

Material requirements

	Product name	U.M.	Quantities					
			CW Single support			CW Double support		
			600 mm	400 mm	300 mm	600 mm	400 mm	300 mm
1	12.5 Smart board	m ²	2.00	2.00	2.00	2.00	2.00	2.00
2	Smart Metal CW Profile	m	1.90	2.70	3.50	3.40	5.00	6.70
3	Smart Metal UW Profile	m	0.70	0.70	0.70	0.70	0.70	0.70
4	Self-tapping screw 212 x 25 with PH2 bit	buc	20.00	26.00	32.00	20.00	26.00	32.00
5	Flat Head drywall screw 4.2 x 13 with PH2 bit	buc	0.00	0.00	0.00	4.00	6.00	8.00
6	Mechanical fastening (*1) (e.g. metal dowel DN6)	buc	3.00	3.00	3.00	3.00	3.00	3.00
7	Single-sided adhesive sealing tape	m	0.80	0.80	0.80	0.80	0.80	0.80
8	Joint tape (fiberglass)	m	3.50	3.50	3.50	3.50	3.50	3.50
9	NIDA Profesional joint plaster	kg	0.60	0.60	0.60	0.60	0.60	0.60
10	Adera Liss(2) finishing skim coat	kg	1.20	1.20	1.20	1.20	1.20	1.20
11	Mineral wool (optional)	m ²	1.00	1.00	1.00	1.00	1.00	1.00
12	Clips for mineral wool (optional)	buc	1.00	1.00	1.00	1.00	1.00	1.00

Note:

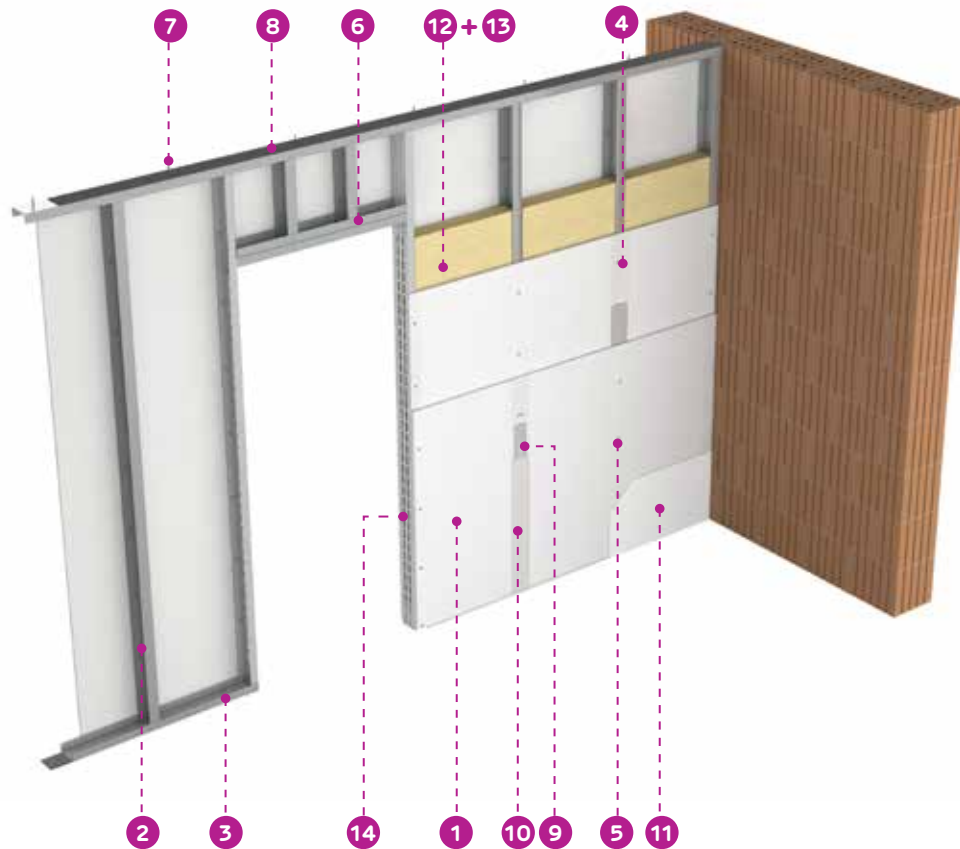
Consumption is calculated for a 3 m high system and does not include construction site losses or peculiarities. Quantities are expressed per 1 m² of system. Mineral wool and fastening elements (clips) are optional, they are used only for soundproofing. Consumption for the finishing skim coat is estimated to get the Q4 degree with a thickness of 1 mm.

(1) The Smart A 12.5 board should be used only in dry spaces with normal humidity. For applications in wet spaces (such as: bathrooms, kitchens etc.), it is necessary to use the Smart H 12.5 plasterboard.

(2) Ready-made paste can instead be used: NIDA Readymix Profesional or NIDA Excellence.

EI30 FIRE-RESISTANT WALL

Double layer wall



- | | |
|---|--|
| 1 Smart A plasterboard 12.5 | 8 Single-adhesive sealing tape |
| 2 Smart Metal CW support profile | 9 Joint tape (fiberglass) |
| 3 Smart Metal UW guide profile | 10 Smart Top joint plaster |
| 4 Self-tapping screw 212 x 25 | 11 Adera Liss finishing skim coat |
| 5 Self-tapping screw 212 x 45 | 12 Mineral wool |
| 6 Flat Head drywall screw 4.2 x 13 | 13 Mineral wool clips |
| 7 Mechanical fastening ^(*) (e.g. metal dowel DN6) | 14 Hollow door frame – Nida Metal UA solution |



System configurations

System type	System thickness [mm]	Smart Metal Support [0.5 mm thickness]	Interaxis support [mm]	Board type	Soundproofing R_w [dB]		Maximum height [m]	
					No mineral wool	With mineral wool	CW single support	CW single support
D100	100	CW50	600	2x2 Smart A 12.5	39	47	3.65	4.46
D100	100	CW50	400	2x2 Smart A 12.5	40	47	4.05	4.66
D100	100	CW50	300	2x2 Smart A 12.5	39	46	4.66	5.00
D125	125	CW75	600	2x2 Smart A 12.5	41	50	4.66	5.00
D125	125	CW75	400	2x2 Smart A 12.5	41	49	5.00	5.00
D125	125	CW75	300	2x2 Smart A 12.5	41	48	5.00	5.00
D150	150	CW100	600	2x2 Smart A 12.5	42	51	5.00	5.00
D150	150	CW100	400	2x2 Smart A 12.5	42	50	5.00	5.00
D150	150	CW100	300	2x2 Smart A 12.5	42	49	5.00	5.00

Material requirements

	Product name	U.M.	Quantities					
			CW Single support			CW Double support		
			600 mm	400 mm	300 mm	600 mm	400 mm	300 mm
1	12.5 Smart board	m ²	4.00	4.00	4.00	4.00	4.00	4.00
2	Smart Metal CW Profile	m	1.90	2.70	3.50	3.40	5.00	6.70
3	Smart Metal UW Profile	m	0.70	0.70	0.70	0.70	0.70	0.70
4.1	Self-tapping screw 212x25 with PH2 bit	buc	12.00	16.00	20.00	12.00	16.00	20.00
4.2	Self-tapping screw 212x45 with PH2 bit	buc	20.00	26.00	32.00	20.00	26.00	32.00
5	Flat Head drywall screw 4.2x13 with PH2 bit	buc	0.00	0.00	0.00	4.00	6.00	8.00
6	Mechanical fastening ⁽¹⁾ (e.g. metal dowel DN6)	buc	3.00	3.00	3.00	3.00	3.00	3.00
7	Single-sided adhesive sealing tape	m	0.80	0.80	0.80	0.80	0.80	0.80
8	Joint tape (fiberglass)	m	3.50	3.50	3.50	3.50	3.50	3.50
9	Smart Top joint plaster	kg	1.20	1.20	1.20	1.20	1.20	1.20
10	Adera Liss ⁽¹⁾ finishing skim coat	kg	1.20	1.20	1.20	1.20	1.20	1.20
11	Mineral wool (optional)	m ²	1.00	1.00	1.00	1.00	1.00	1.00
12	Clips for mineral wool (optional)	buc	1.00	1.00	1.00	1.00	1.00	1.00

Note:

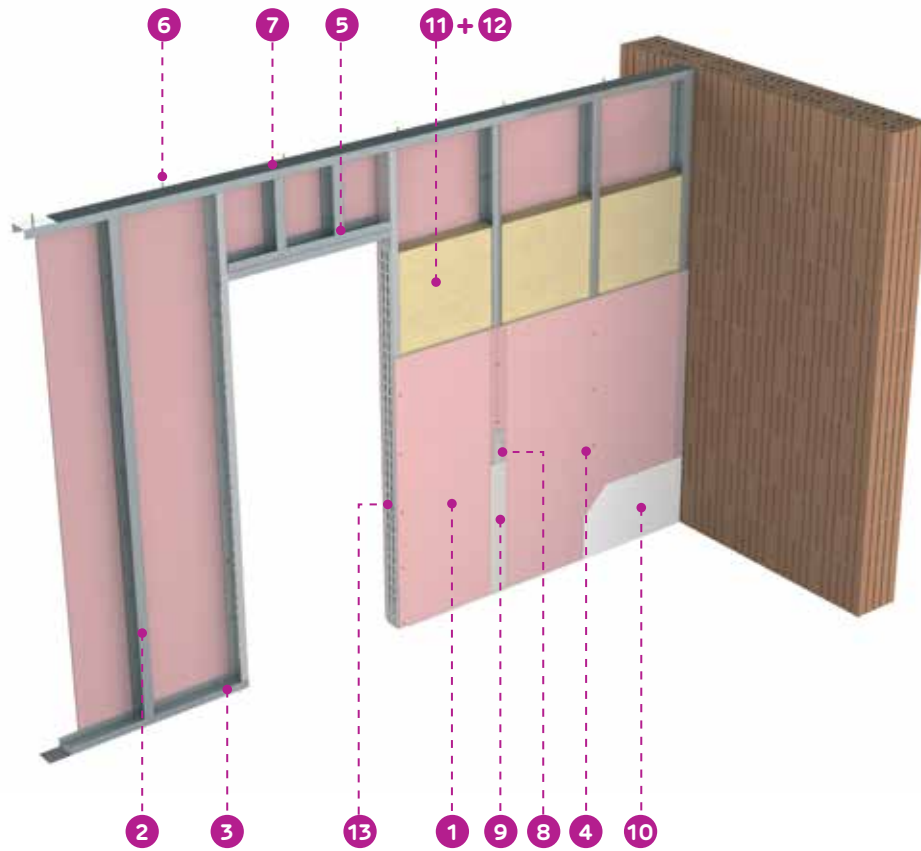
Consumption is calculated for a 3 m high system and does not include construction site losses or peculiarities. Quantities are expressed per 1 m² of system. Mineral wool and fastening elements (clips) are optional, they are used only for soundproofing. Consumption for the finishing skim coat is estimated to get the Q4 degree with a thickness of 1 mm.

(1) The Smart A 12.5 board should be used only in dry spaces with normal humidity. For applications in wet spaces (such as: bathrooms, kitchens etc.), it is necessary to use the Smart H 12.5 plasterboard.

(2) Ready-made paste can instead be used: NIDA Readymix Profesional or NIDA Excellence.

EI45 FIRE-RESISTANT WALL

Single layer wall



- | | |
|---|--|
| 1 Smart F plasterboard 12.5 | 8 Joint tape (fiberglass) |
| 2 Smart Metal CW support profile | 9 Smart Top joint plaster |
| 3 Smart Metal UW guide profile | 10 Adera Liss finishing skim coat |
| 4 Self-tapping screw 212 x 25 | 11 Mineral wool |
| 5 Flat Head drywall screw 4.2 x 13 | 12 Mineral wool clips |
| 6 Mechanical fastening (*1) (e.g. metal dowel DN6) | 13 Hollow door frame – Nida Metal UA solution |
| 7 Single-sided adhesive sealing tape | |



System configurations

System type	System thickness [mm]	Smart Metal Support [0.5 mm thickness]	Interaxis support [mm]	Board type	Soundproofing R_w [dB]		Maximum height [m]	
					No mineral wool	With mineral wool	CW single support	CW single support
D75	75	CW50	600	2x1 Smart F 12.5	34	41	2.63	3.44
D75	75	CW50	400	2x1 Smart F 12.5	34	40	3.44	3.65
D75	75	CW50	300	2x1 Smart F 12.5	34	40	4.05	4.66
D100	100	CW75	600	2x1 Smart F 12.5	35	43	3.65	5.00
D100	100	CW75	400	2x1 Smart F 12.5	35	42	4.86	5.00
D100	100	CW75	300	2x1 Smart F 12.5	35	42	5.00	5.00
D125	125	CW100	600	2x1 Smart F 12.5	36	44	4.05	5.00
D125	125	CW100	400	2x1 Smart F 12.5	36	44	5.00	5.00
D125	125	CW100	300	2x1 Smart F 12.5	36	43	5.00	5.00

Material requirements

	Product name	U.M.	Quantities					
			CW Single support			CW Double support		
			600 mm	400 mm	300 mm	600 mm	400 mm	300 mm
1	12.5 Smart board	m ²	2.00	2.00	2.00	2.00	2.00	2.00
2	Smart Metal CW Profile	m	1.90	2.70	3.50	3.40	5.00	6.70
3	Smart Metal UW Profile	m	0.70	0.70	0.70	0.70	0.70	0.70
4	Self-tapping screw 212 x 25 with PH2 bit	buc	20.00	26.00	32.00	20.00	26.00	32.00
5	Flat Head drywall screw 4.2 x 13 with PH2 bit	buc	0.00	0.00	0.00	4.00	6.00	8.00
6	Mechanical fastening ⁽¹⁾ (e.g. metal dowel DN6)	buc	3.00	3.00	3.00	3.00	3.00	3.00
7	Single-sided adhesive sealing tape	m	0.80	0.80	0.80	0.80	0.80	0.80
8	Joint tape (fiberglass)	m	3.50	3.50	3.50	3.50	3.50	3.50
9	SMART TOP joint plaster	kg	0.60	0.60	0.60	0.60	0.60	0.60
10	Adera Liss ⁽¹⁾ finishing skim coat	kg	1.20	1.20	1.20	1.20	1.20	1.20
11	Mineral wool (optional)	m ²	1.00	1.00	1.00	1.00	1.00	1.00
12	Clips for mineral wool (optional)	buc	1.00	1.00	1.00	1.00	1.00	1.00

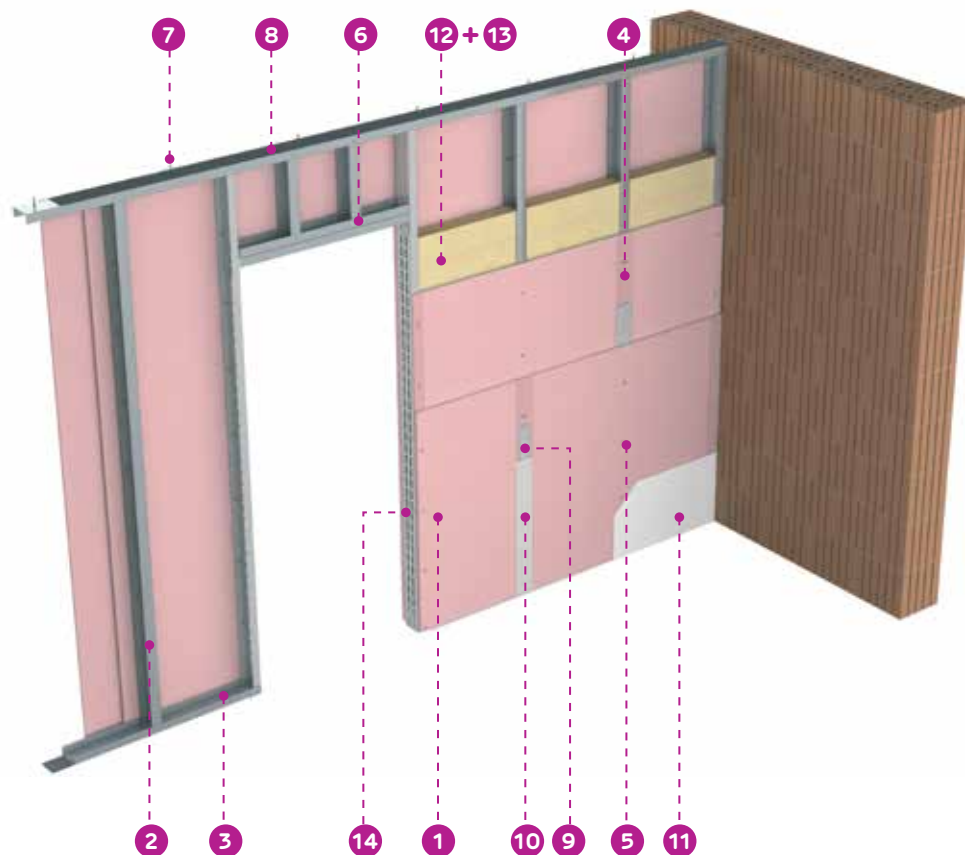
Note:

Consumption is calculated for a 3 m high system and does not include construction site losses or peculiarities. Quantities are expressed per 1 m² of system. Mineral wool and fastening elements (clips) are optional, they are used only for soundproofing. Consumption for the finishing skim coat is estimated to get the Q4 degree with a thickness of 1 mm.

(1) Ready-made paste can instead be used: NIDA Readymix Profesional or NIDA Excellence.

EI90 FIRE-RESISTANT WALL

Double layer wall



- | | |
|---|--|
| 1 Smart F 12.5 plasterboard | 8 Single-sided adhesive sealing tape |
| 2 Smart Metal CW Guide profile | 9 Joint tape (fiberglass) |
| 3 Smart Metal UW Guide profile | 10 SMART TOP joint plaster |
| 4 Self-tapping screw 212 x 25 | 11 Adera Liss finishing skim coat |
| 5 Self-tapping screw 212 x 45 | 12 Mineral wool |
| 6 Flat Head drywall screw 4.2 x 13 | 13 Mineral wool clips |
| 7 Mechanical fastening ^(*) (e.g. metal dowel DN6) | 14 Hollow door frame – Nida Metal UA solution |



System configurations

System type	System thickness [mm]	Smart Metal Support [0.5 mm thickness]	Interaxis support [mm]	Board type	Soundproofing R_w [dB]		Maximum height [m]	
					No mineral wool	With mineral wool	CW single support	CW single support
D100	100	CW50	600	2x2 Smart F 12.5	42	51	3.65	4.46
D100	100	CW50	400	2x2 Smart F 12.5	42	50	4.05	4.66
D100	100	CW50	300	2x2 Smart F 12.5	42	49	4.66	5.00
D125	125	CW75	600	2x2 Smart F 12.5	43	53	4.66	5.00
D125	125	CW75	400	2x2 Smart F 12.5	43	52	5.00	5.00
D125	125	CW75	300	2x2 Smart F 12.5	43	51	5.00	5.00
D150	150	CW100	600	2x2 Smart F 12.5	45	55	5.00	5.00
D150	150	CW100	400	2x2 Smart F 12.5	45	53	5.00	5.00
D150	150	CW100	300	2x2 Smart F 12.5	44	52	5.00	5.00

Material requirements

	Product name	U.M.	Quantities					
			CW Single support			CW Double support		
			600 mm	400 mm	300 mm	600 mm	400 mm	300 mm
1	12.5 Smart F board	m ²	4.00	4.00	4.00	4.00	4.00	4.00
2	Smart Metal CW Profile	m	1.90	2.70	3.50	3.40	5.00	6.70
3	Smart Metal UW Profile	m	0.70	0.70	0.70	0.70	0.70	0.70
4.1	Self-tapping screw 212 x 25 with PH2 bit	buc	12.00	16.00	20.00	12.00	16.00	20.00
4.2	Self-tapping screw 212 x45 with PH2 bit	buc	20.00	26.00	32.00	20.00	26.00	32.00
5	Flat Head drywall screw 4.2 x 13 with PH2 bit	buc	0.00	0.00	0.00	4.00	6.00	8.00
6	Mechanical fastening ⁽¹⁾ (e.g. metal dowel DN6)	buc	3.00	3.00	3.00	3.00	3.00	3.00
7	Single-sided adhesive sealing tape	m	0.80	0.80	0.80	0.80	0.80	0.80
8	Joint tape (fiberglass)	m	3.50	3.50	3.50	3.50	3.50	3.50
9	SMART TOP joint plaster	kg	1.20	1.20	1.20	1.20	1.20	1.20
10	Adera Liss ⁽¹⁾ finishing skim coat	kg	1.20	1.20	1.20	1.20	1.20	1.20
11	Mineral wool (optional)	m ²	1.00	1.00	1.00	1.00	1.00	1.00
12	Clips for mineral wool (optional)	buc	1.00	1.00	1.00	1.00	1.00	1.00

Note:

Consumption is calculated for a 3 m high system and does not include construction site losses or peculiarities. Quantities are expressed per 1 m² of system. Mineral wool and fastening elements (clips) are optional, they are used only for soundproofing. Consumption for the finishing skim coat is estimated to get the Q4 degree with a thickness of 1 mm.

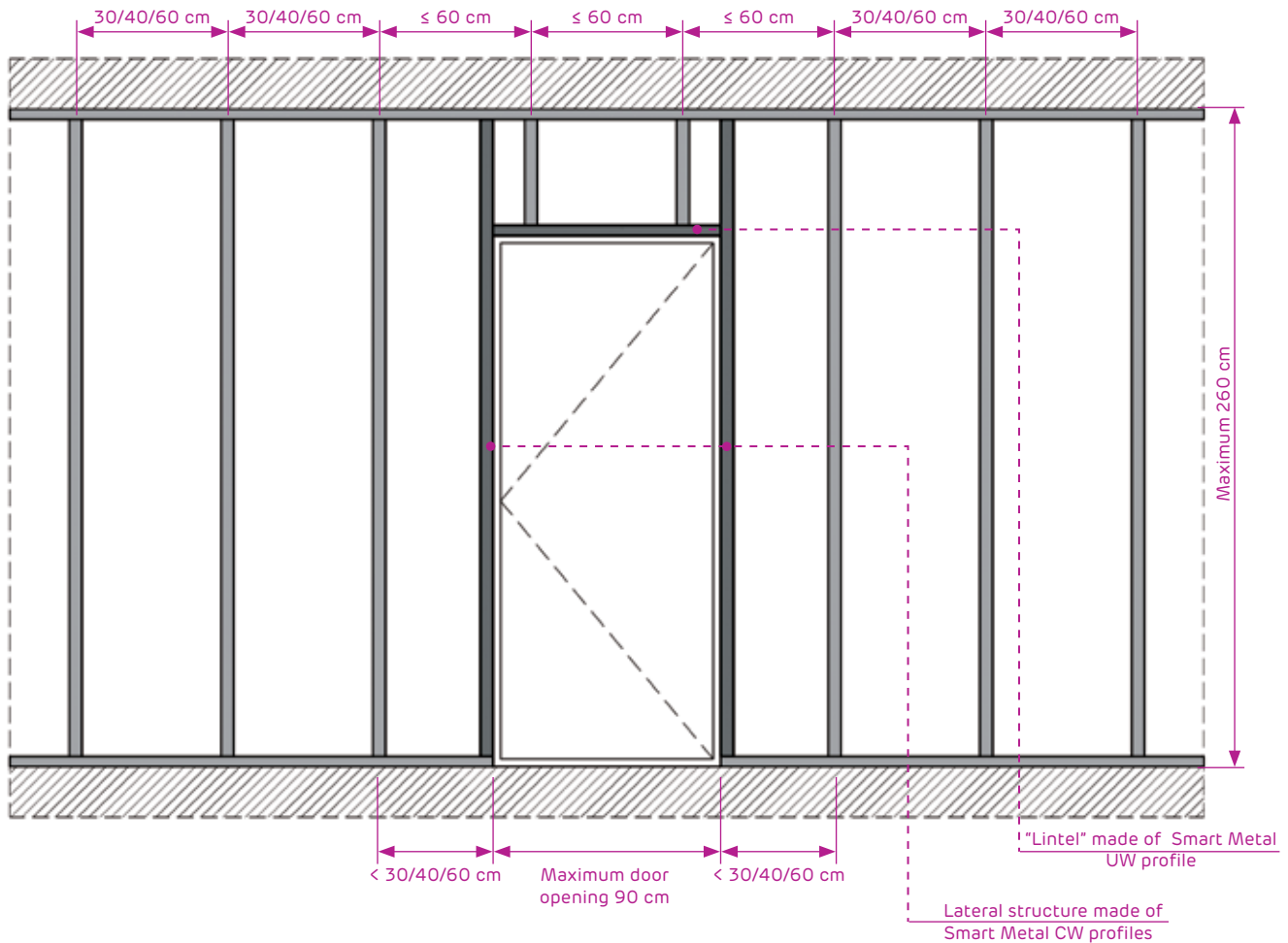
(1) Ready-made paste can instead be used: NIDA Readymix Profesional or NIDA Excellence.

BUILDING OF HOLLOW DOOR FRAME IN PLASTERBOARD WALLS - SMART

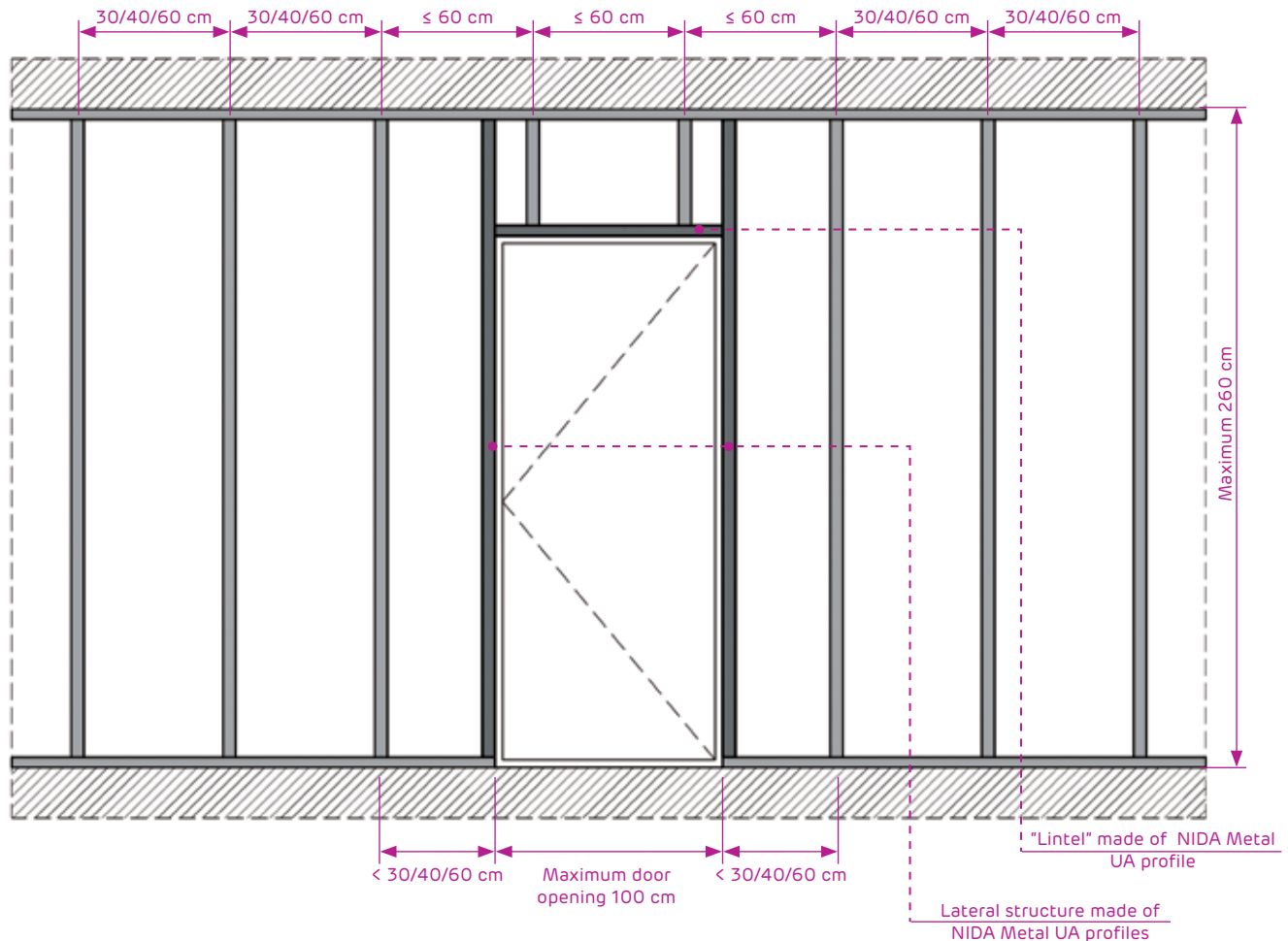
Hollow door frame structure configurations:

Solution for the hollow door frame	Wall maximum height [cm]	Maximum door opening [cm]	Remarks
Frame built of profiles Smart Metal CW- UW	260	90	Door sheet maximum weight: 20 kg
Frame built of profiles Smart Metal UA	500	100	

Hollow door frame structure configurations:

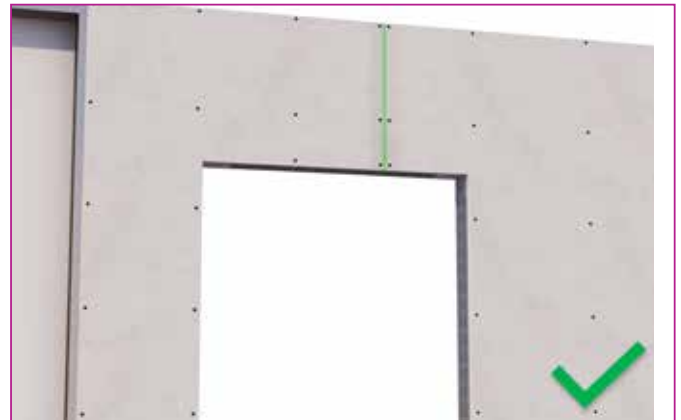


Door frame made of NIDA Metal UA structure



Appropriate drywall cladding in the door opening area

In the door opening area, in order to avoid the appearance of cracks at the joints, the installation of plasterboard boards should be carried out in such a way that there is no horizontal or vertical joint between the boards to extend the sides of the door opening.



Siniat Romania



Siniat Romania

SMART PRODUCT AND
APPLICATION RANGE

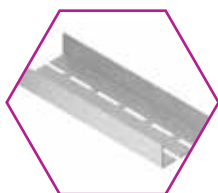
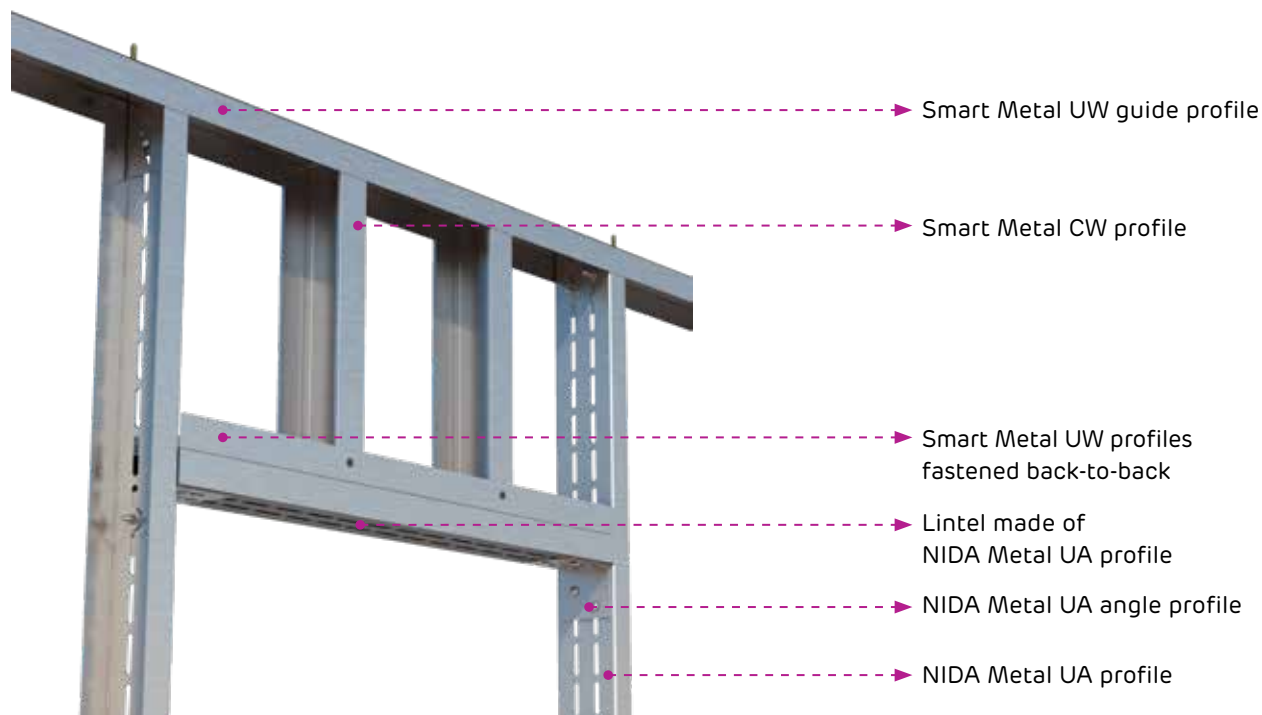
BUILDING OF THE DOOR FRAMES WITH NIDA METAL UA SINIAT PROFILES



KEY

1. NIDA Metal UA profile
2. Guide Smart Metal UW profile
3. Smart Metal CW support
4. NIDA Metal UA Angle profile
5. M8 metric screw with nut
6. Mechanical fastening^(*)
7. Single-sided adhesive sealing tape

Closing detail above the door opening Making a lintel of NIDA Metal UA profile



NIDA Metal UA profile



NIDA Metal UA angle profile



M8 metric screw with nut



DN6 metal dowel

Product name	Quantity [pcs.]
NIDA Metal UA 2 mm profile (length 3 m)	3
UA angle profile	6
M8 metric screw with nut	16
Mechanical fastening (*1) (e.g. metal dowel DN6)	8

Note:

The quantities of materials are calculated for a door opening ≤ 1.2 m, in a 2.6 m high wall. The quantities are estimated per piece of material without considering the construction site losses or particularities.



ADERA Liss

Finishing skim coat for manual
and machine application

Adera Liss is a white plaster-based skim coat, pre-dosed with special additives to be a durable foundation for wall finishing. When mixed with water, a homogeneous paste is formed, with long working time and higher workability. After drying, a smooth, uniform, and glassy final surface is obtained, which is the last finishing layer.

SCOPE OF USE

- ▶ Ideal for exceptional finishing of plaster renderings, for levelling skim coats and plasterboards;

PERFORMANCES

Thickness of the material
layer

0 - 1 mm

Specific consumption

0,4 kg/m²/mm

Working time

90 - 100 minutes

Manual and machine
application



BENEFITS



HIGHLY EASY TO APPLY
RESULTS IN PARTICULARLY SMOOTH
SURFACES



EXCELLENT POLISHING EVEN LONG
AFTER APPLICATION



LOW MATERIAL
CONSUMPTION

PROCEDURE

PREPARATION

- ▶ Clean recipients and tools should be used to prepare the paste
- ▶ Sprinkle powder in the water, never the other way around
- ▶ Metal items will be embedded and protected against corrosion

APPLICATION

- ▶ Apply on stable, dry, and well-cleaned surfaces
- ▶ Apply with a stainless-steel trowel
- ▶ Apply one layer or successive layers until a flat surface is obtained
- ▶ The application thickness is 0 - 1 mm
- ▶ If you want to sand the surface, use 180 - 220 grit sandpaper
- ▶ It is used at temperatures higher than 5 °C



Info +40 312 240 100



www.siniat.ro



Calculator for drywall systems



NIDA Readymix Profesional

Ready-made paste

NIDA Readymix Profesional is a ready-mixed, white paste for manual or by machine application inside buildings. It is used for the jointing and finishing of plasterboard and for complete skim coating of mineral surfaces.

SCOPE OF USE

- ▶ Drywall systems to achieve a Q3 or Q4 finish
- ▶ For full-surface finishing of walls and ceilings in mineral substrates, both manually and using machine
- ▶ Finishes on drywall substrates, gypsum render, filler plaster
- ▶ The resulting perfectly smooth surface is ideal as a substrate for paint, wallpaper and other decorative materials

PERFORMANCES

Consumption for applications on renders, skim coats / one

approx. 1,5 kg/m²/mm

Consumption for drywall systems, finishing Q3 or Q4

approx. 0.5 - 0.6 kg/m²/mm

Optimum thickness of a layer

1,0 la 1,5 mm



BENEFITS



CAN BE APPLIED MANUALLY, WITH A MACHINE OR ROLLER



EASY TO APPLY



SUPER-WHITE AND SMOOTH SURFACES ARE OBTAINED, READY FOR PAINTING

PROCEDURE

NIDA Readymix Profesional is produced as a paste, ready to apply immediately after opening the box. Manual or machine application is done at an ambient and surface temperature of +5°C to +25°C. The paste should be applied to the surfaces by using a finishing trowel, a spatula or roller (manual application) or by spraying with a suitable finishing equipment (machine application). The paste can be applied after prior preparation of the surfaces. The substrate must be dry and clean. The drying time of a coat is at least 24 hours depending on the ambient temperature and humidity.



Siniat Romania



Siniat Romania

SMART PRODUCT AND APPLICATION RANGE

nida Excellence

Self-levelling finishing skim coat



Nida Excellence ready-made skim coat is a thin, polymeric paste for finishing indoor flat surfaces using a spatula. It has a good adhesion to the surface. It is easy to apply. **HIGHLY EASY TO APPLY.** After machine application of the product, surfaces no longer require manual finishing.

SCOPE OF USE

- ▶ The product is intended for machine skim coating of indoor mineral surfaces (plasterboard, gypsum renders, filling coats). It is characterised by a perfect application and a high degree of whiteness, which is an excellent basis for subsequent painting work;

PERFORMANCES

Specific consumption **1,5 - 2,5 kg/m²/mm**

Optimum thickness of a layer **1,0 - 1,5 mm**

Maximum thickness of a layer **2 mm**



BENEFITS



NO MANUAL FINISHING IS NEEDED



REDUCED LABOUR COSTS



MACHINE APPLICATION



SAVES WORKING TIME

PROCEDURE

- ▶ Nida Excellence self-levelling skim coat is produced as a paste, ready to use immediately after opening the packaging. No water should be added to the product. Before application, the product should be mixed gently with a mixer at low speed
- ▶ Use a high-pressure airless machine to apply the product. Adjust the angle of application to the type of work being carried out. The use of a 529 nozzle is recommended. During application the working pressure should be at least 120-130 bar. The distance between the wall and the gun should be approx. 100 cm. The maximum thickness of the coat will be 2 mm when cross-applying (one pass vertically, the second horizontally). The product does not need any further finishing work. Before painting, the surface should be smoothed with 150-180 grit sandpaper
- ▶ The paint can be applied after 24 hours, depending on working conditions: air temperature and humidity



Info +40 312 240 100



www.siniat.ro



Calculator for drywall systems

SALES TEAM

Contact



Greece

Marius Tarbasanu - SALES MANAGER
+40 757 113 506
marius.tarbasanu@etexgroup.com

.....
George Mylonas - PROJECT SALES REPRESENTATIVE
+30 693 223 4796
george.mylonas@etexgroup.com

General contact information

Romania (central)
Etex Building Performance S.A.
Str. Vulturilor 98, et. 5-6, code 030857,
Sector 3, Bucharest
+40 312 240 100
siniat.ro@etexgroup.com

RECOMMENDATIONS FOR STORAGE AND TRANSPORT OF BOARDS

The high quality of the finish using NIDA Smart 12.5 mm gypsum plasterboards can be ensured if the following recommendations are followed:

- ▶ the boards should be transported with the cross edge vertically or with special adapted means of transport (trolleys, forklifts, trucks)
- ▶ the boards should be stored on pallets or wooden spacers, spaced approximately 50 cm from each other. The bundles should be stored on dry, smooth floors. This type of storage prevents damage (deformation or breakage).
- ▶ storage and installation must be done indoors at temperatures between 5-40°C and with a relative humidity of maximum 60% in the rooms
- ▶ boards that have become damp during storage must be thoroughly dried before installation. For this purpose, they should be laid vertically on a smooth floor, allowing air to pass freely between them.
- ▶ storage for long periods in direct sunlight is not recommended
- ▶ the load-bearing capacity of the floor must be taken into account when storing the boards.

For example: 72 NIDA Smart boards 12,5 mm thick account for approx. 468 kg/m² weight on the floor.



EASY TO CUT, PLACE AND HANDLE



TECHNICAL PERFORMANCE



SUSTAINABILITY

The data and parameters contained in this catalogue refer only to products manufactured by **Etex Building Performance SA** and are in accordance with Romanian legal requirements and product characteristics as of the date of issue (catalogue date 1 September 2023). Please note that the above information does not apply to similar products.

Etex Building Performance SA may not be held liable for any use of the products presented in this catalogue other than as indicated in this material.

We assure you that **Etex Building Performance SA** makes every effort and takes all necessary measures in order to continuously align our products with the standards required by Romanian legislation. In this regard, our company makes regular checks to identify any changes in legislative requirements and to implement them, if you notice any such inconsistencies, please notify them to the e-mail address siniat.ro@etexgroup.com

However, the manufacturer **Etex Building Performance SA** reserves the right to make changes to product features, systems and technical details of this catalogue.

General, technical and safety aspects of PLASTERBOARDS





Innovation for over 110 years

Present in 45 countries, Etex Group inspires the world to build safe, sustainable, smart and aesthetic spaces with a wide range of easy solutions.

From innovative modular systems to top-of-the-line fibre cement and plasterboard systems. From high-performance applications for wall plastering, façade cladding to fire protection and building insulation.

Etex Building Performance S.A.

Str. Vulturilor nr. 98, et. 5-6
sector 3, București
Tel.: (+4) 031 224 01 00
siniat.ro@etexgroup.com



For details and solutions, visit
www.siniat.ro

You can also find us at

 /siniat.romania

 @siniatromania

 Siniat Romania

Edition 2023